

T30 Proximity Cap Kit | P/N: 8800699

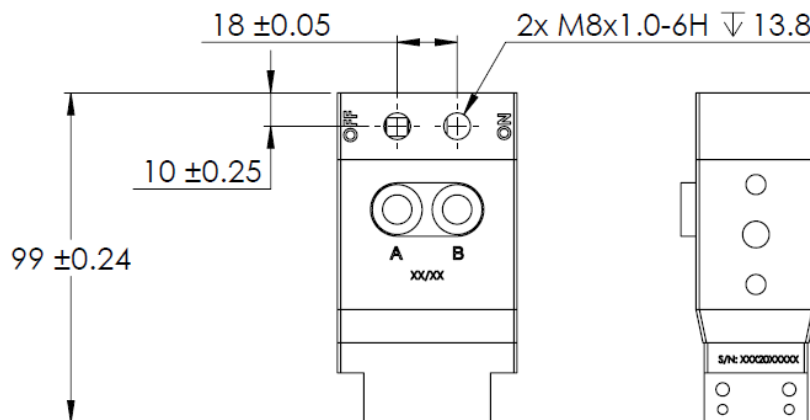
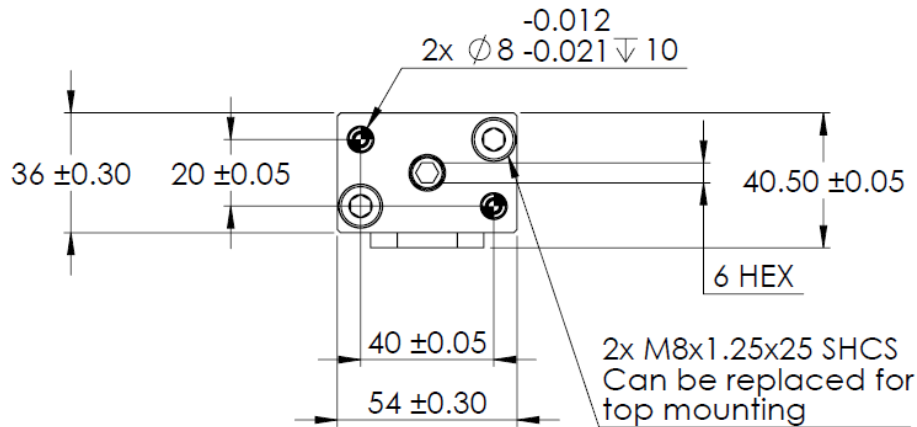
Summary

This accessory kit bolts to the top of the Magswitch T30 tool (81401124) and provides a rotating flag and threaded bores for M8 inductive proximity sensors. The dowel bores on the top surface mimic those on the top surface of the T30, allowing the tool and Prox Cap assembly to be dowel-located and mounted to flat plates.



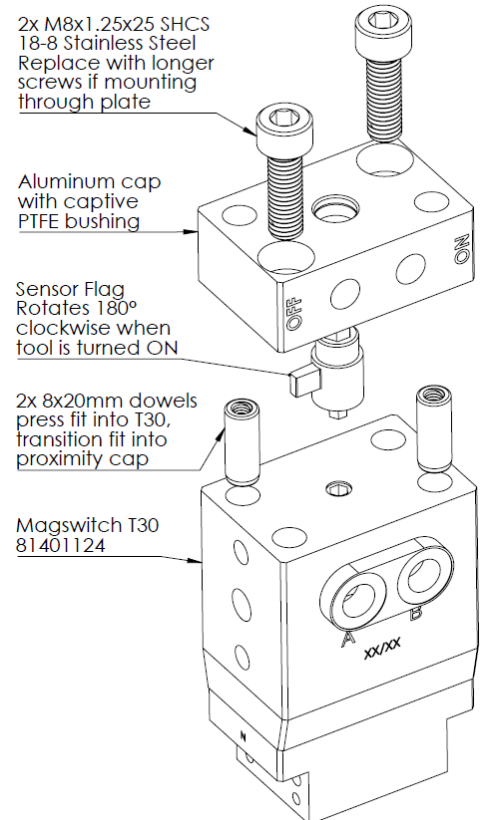
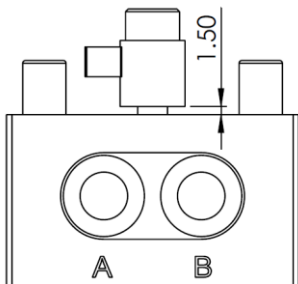
Specifications

Proximity Sensor Bore Type	M8x1.0 threaded barrel	
Recommended Proximity Sensor Sensing Distance	1.5mm - 2.0mm	
Recommended Sensor Mounting Type	Flush Mount sensors	
Inductive Sensor Target Material	Stainless steel	
Top Surface Mounting Pattern	See dowel and fastener pattern below	
Net Weight	0.29 lbs	0.13 kg



Installation Instructions

- Actuate the T30 tool to the OFF state.
- Remove the T30 tool from preexisting mounting surfaces as required to expose the top surface of the tool. Ensure dowel and fastener holes are clean. Confirm the top surface of the tool is flat and smooth.
- Align dowel pins with the smooth bores on top of the actuator and press fit the dowels until they are firmly seated. The dowels should protrude approximately 10mm above the top surface of the tool. The threaded features of the dowels should be oriented upward and outward for ease of service later.
- Insert the sensor flag into the hexagonal bore with the steel tab pointing to the left or port A when the tool is viewed from the front. This is a transitional fit and the hexagonal features may require light pressure and wiggling to ensure they are mated.
 - There will be a gap of approximately 1.5mm between the circular bottom surface of the flag and the top face of the T30 actuator.



- Orient the aluminum proximity cap with the "OFF" and "ON" engravings and proximity sensor bores on the same face as pneumatic ports "A" and "B." Slide the aluminum proximity cap over the dowels and proximity flag. This is a transitional fit and may require firm pressure and wiggling to fully seat the cap. Ensure there is no gap between the proximity cap and the top surface of the T30 tool.
- Thread the "OFF" state M8 proximity sensor into the "OFF" port until resistance is felt. Unthread the sensor 1/4 turn and test its function, then tighten the locking nut to secure it at the proper depth.
- Actuate the T30 tool ON so the flag is now in front of the "ON" port.
- Thread the "ON" state M8 proximity sensor into the "ON" port until resistance is felt. Unthread the sensor 1/4 turn and test its function, then tighten the locking nut to secure it at the proper depth.
- **WARNING: If the sensor is set too deep, it can rub or be impacted by the rotating flag and damage the T30. If the sensor is set too shallow, it may not register the presence of the flag.**
- If mounting the T30 using the side NAAMS dowel and fastener pattern(s), apply Loctite 222 to the fastener threads and install the provided 2x M8 Socket Head Cap Screws.
- If mounting the T30 using the top dowel holes, obtain longer M8x1.25, 18-8 stainless steel socket head cap screws. The length of these fasteners should be 25mm + the thickness of the mounting plate. Install your M8 mounting dowels into the top dowel holes and thread the longer fasteners through the mounting plate and proximity cap into the threaded bores of the T30 underneath.
- Torque all screws to 10Nm. There should be no visible gaps between the tool, proximity cap, or mounting surfaces.

