

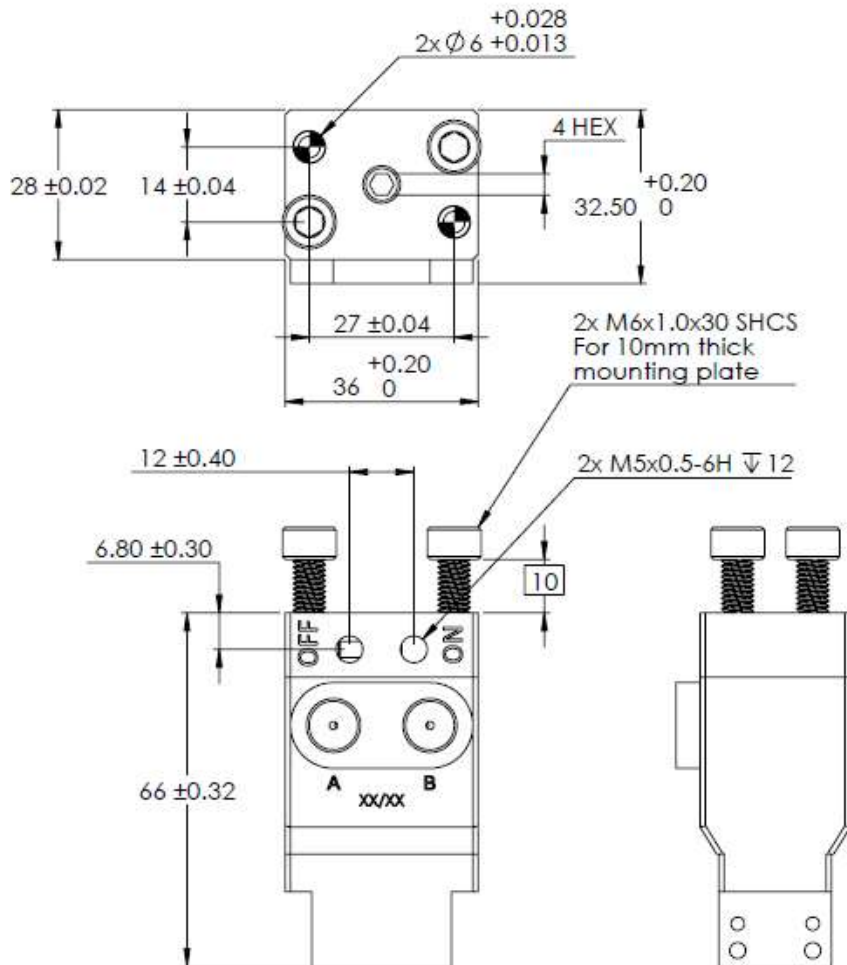
## T20 Proximity Cap Kit | P/N: 8800864

### Summary

This accessory kit bolts to the top of the Magswitch T20 tool (81401258) and provides a rotating flag and threaded bores for M5 inductive proximity sensors. The dowel bores on the top surface mimic those on the top surface of the T20, allowing the tool and Prox Cap assembly to be dowel-located and mounted to flat plates.

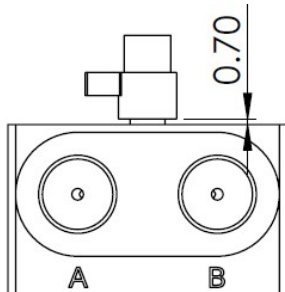
### Specifications

Proximity Sensor Bore Type	M5x0.5 threaded barrel	
Recommended Proximity Sensor Sensing Distance	0.5mm - 3.0mm	
Top Surface Mounting Pattern	See dowel and fastener pattern below	
Net Weight	0.11 lbs	0.05 kg



## Installation Instructions

- Actuate the T20 tool to the OFF state.
- Remove the T20 tool from preexisting mounting surfaces as required to expose the top surface of the tool. Ensure dowel and fastener holes are clean. Confirm the top surface of the tool is flat and smooth.
- Insert the sensor flag into the hexagonal bore with the steel tab pointing to the left or port A when the tool is viewed from the front. This is a transitional fit and the hexagonal features may require light pressure and wiggling to ensure they are mated.
  - There will be a gap of approximately 0.7mm between the circular bottom surface of the flag and the top face of the T20 actuator.



- Orient the aluminum proximity cap with the "OFF" and "ON" engravings and proximity sensor bores on the same face as pneumatic ports "A" and "B." Slide the aluminum proximity cap over the proximity sensor flag and push the preinstalled dowels into the top surface of the T20. This is a transitional fit and may require firm pressure and wiggling to fully seat the cap. Ensure there is no gap between the proximity cap and the top surface of the T20 tool.
- Thread the "OFF" state M5 proximity sensor into the "OFF" port until resistance is felt. Unthread the sensor 1/4 turn and test its function, then tighten the locking nut to secure it at the proper depth.
- Actuate the T20 tool ON so the flag is now in front of the "ON" port.
- Thread the "ON" state M5 proximity sensor into the "ON" port until resistance is felt. Unthread the sensor 1/4 turn and test its function, then tighten the locking nut to secure it at the proper depth.
- **WARNING: If the sensor is set too deep, it can rub or be impacted by the rotating flag and damage the T20. If the sensor is set too shallow, it may not register the presence of the flag.**
- For mounting the T20 using the top dowel holes, use the provided M6x1.0x30, 18-8 stainless steel socket head cap screws with a mounting plate that is 10mm thick. If other thicknesses of mounting plate are used, the length of these fasteners should be 20mm + the thickness of the mounting plate. Install your M6 mounting dowels into the top dowel holes and thread the longer fasteners through the mounting plate and proximity cap into the threaded bores of the T20 underneath.
- Torque all screws to 5Nm. There should be no visible gaps between the tool, proximity cap, or mounting surfaces.

