

M30 2.0 | P/N: 81401590

The M30 2.0 magnetic gripper brings back a classic design with several upgrades. This deep field pneumatic magnet is compact and powerful boasting cutting-edge technology enhancements and NAAMS (and optional G-threaded) mounting interfaces. This automation magnet is great for industrial applications, Pick and Place, robotic End of Arm Tools (EOAT) material handling, sheet metal handling, automation fixtures in Body-in-White (BIW), COBOT and other robotic process automation.

WARNING!
Do Not Operate Unless In Contact With Ferrous Target

Specifications

Maximum Breakaway Force ¹	729 N	
Maximum Shear Force ¹	157 N	
Thickness for De-Stack ²	0.157 in	4 mm
Maximum Allowable Pressure	145 psi	10.0 Bar
On Target Actuation Pressure	28 psi	1.9 Bar
Air Port Threads	2x G1/8	
Net Weight	1.03 lb	0.47 kg
Individual Magnetic Pole Footprint	1.65" x 1.23"	42mm x 31.2mm
Mounting Options	1x Top (With 3/8 NPT Mounting Option): 3/8 - 18 NPT 1x Top (With NAAMS Mounting Option): Ø6-M8-Ø6	



Material Thickness - mm (in)	0.5 (0.020)	0.6 (0.024)	0.8 (0.031)	1.0 (0.039)	2.0 (0.079)	3.0 (0.118)	4.0 (0.157)	5.0 (0.197)	6.0 (0.236)
Maximum Force ¹ - Newton (N)	71	83	129	219	437	645	710	729	729
Required Air Pressure ³ - Bar (psi)	4.1 (60)	3.8 (55)	3.4 (50)	3.1 (45)	2.2 (32)	1.9 (28)	1.9 (28)	1.9 (28)	1.9 (28)

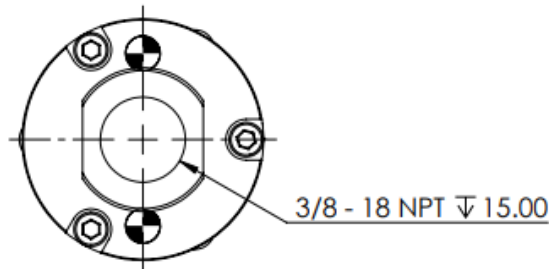
¹ Determined in laboratory environment on 2" thick SAE1018 Steel with surface roughness 63 micro inches. Many factors contribute to the actual breakaway force and safe working load in each application. Consult a Magswitch Applications Engineer and test the Magswitch in each application before deployment.

² Tested and Determined with Two SAE1018 Steel Sheets L=200mm W=200mm Thickness=4 mm.

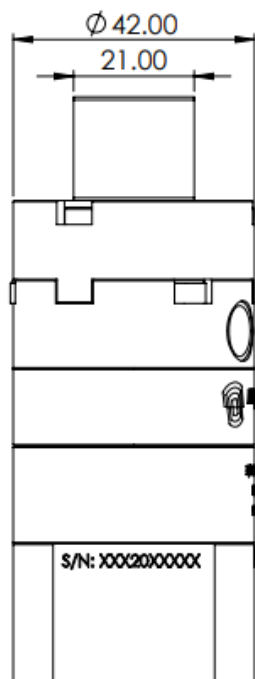
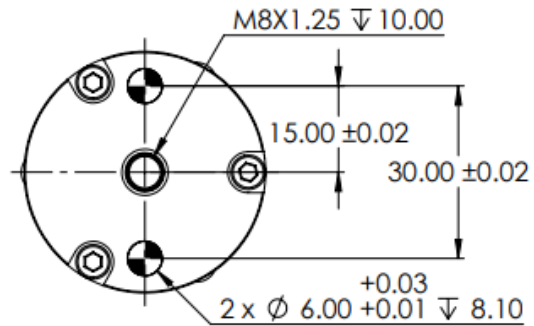
³ Values may vary by +/- 5%.

⁴ Maximum forces listed above are not safe lifting forces. Designer must take into account safety factor when specifying tool. Magswitch recommends SWL = 5:1 for most applications.

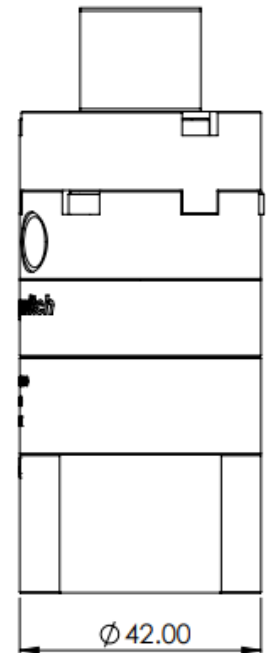
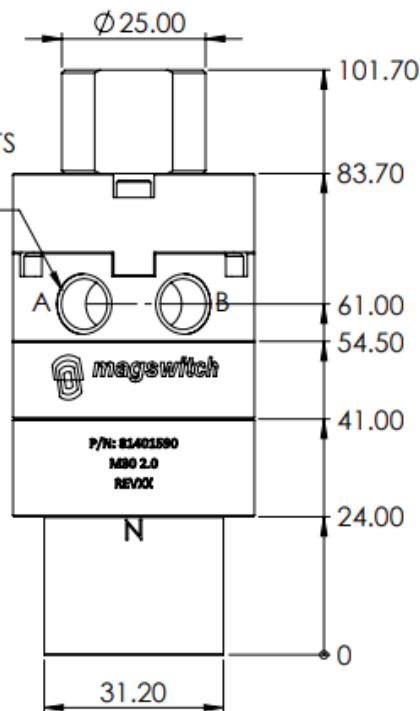
TOP VIEW WITH 3/8 NPT Mounting Option



TOP VIEW WITH NAAMS Mounting Option



2X G1/8 AIR PORTS
A: MAGNET ON
B: MAGNET OFF



Center of Gravity (COG) Location

