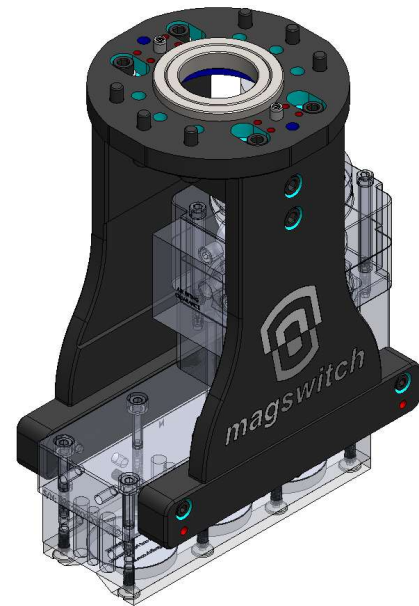


# PLAY70 EOAT 2.0

## Summary

The PLAY70 EOAT 2.0 is modular End of Arm Tooling for PLAY70-Series magnets (PLAY70x2, PLAY70x3, PLAY70x4). Its single magnet EOAT allows for quick installation setup on industrial robots. The EOAT consists of 3 sections: Interface, Risers, and Adapters. The Cradle (Interface/Riser assembly) gives common mounting for the tool specific Adapters allowing for easy removing and tool swapping.

Robot Interface Plates and Risers can be custom made for unique applications. Please reach out to Magswitch for more information.



## Specifications

Net Weight (Cradle Only)	14.3lb	6.50kg
Footprint (Cradle Only)	7.71x7.71x12.0in	196x196x305mm

\*See Tool Specific Pages for Complete EOAT Weights and Sizes

## Compatible Tools

PLAY70x2 2.0	81401497
PLAY70x3 2.0	81401545
PLAY70x4 2.0	81401520

## Complete Kits

PLAY70x2 Cradle and Adapters	88001906
PLAY70x3 Cradle and Adapters	88001907
PLAY70x4 Cradle and Adapters	88001908

\*Magnets Sold Separately

## Modular Kits

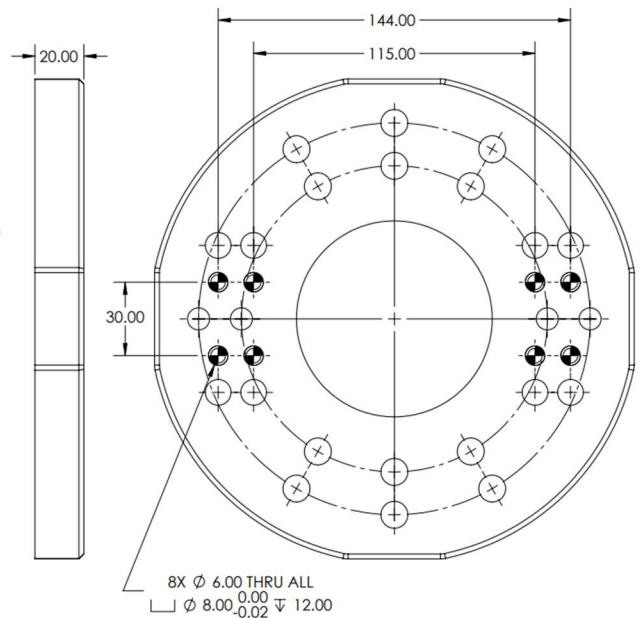
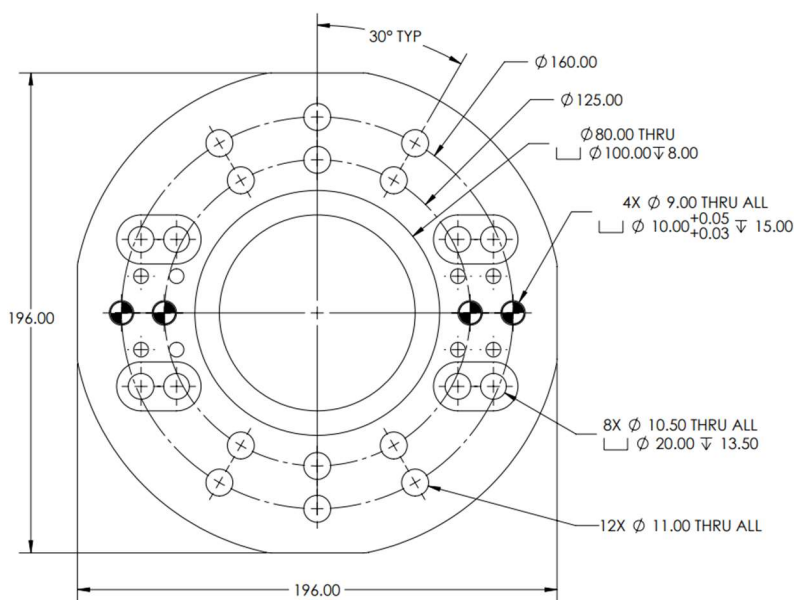
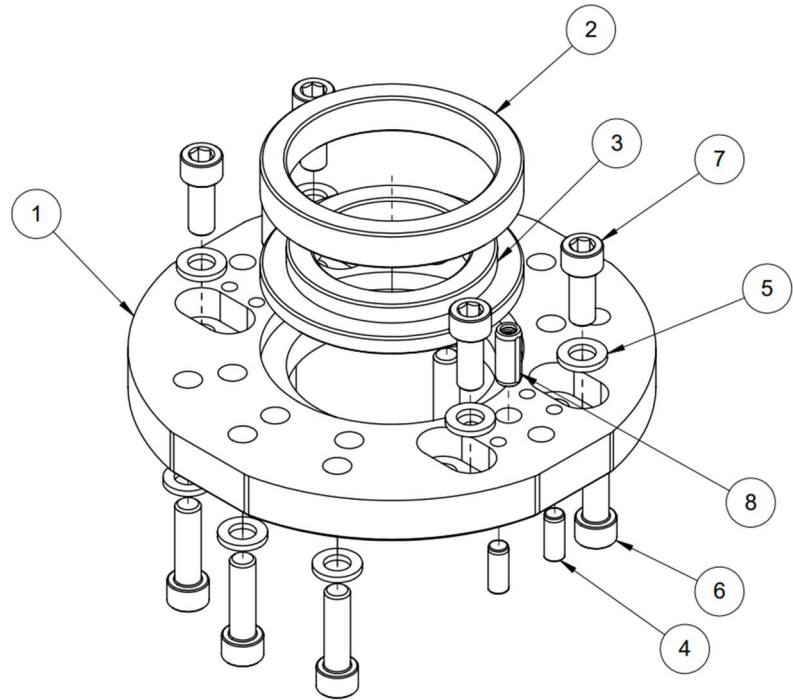
Interface Plate 125/160 B.C.	88001887
PLAY70 Risers (All Tools)	88001888
PLAY70 Cradle (Interface and Risers)	88001909
PLAY70x2 Adapters	88001889
PLAY70x3 Adapters	88001890
PLAY70x4 Adapters	88001891
PLAY70x2 Adapters and Risers (No Interface Plate)	88001903
PLAY70x3 Adapters and Risers (No Interface Plate)	88001904
PLAY70x4 Adapters and Risers (No Interface Plate)	88001905

## Interface Plate Kit - 88001887

Standard Interface plate includes a 125 / 160 B.C. pattern that can be used on ISO 125 and ISO 160 robot wrists. The Kit also contains an 80mm and 100mm Boss Puck for wrist alignment.

### Kit Components:

ITEM No.	Description
1	125 / 160 B.C. Interface Plate
2	100x16 Boss Puck
3	80x8 To 100x8 Boss Puck
4	8x20 Dowel Pin
5	M10 Washer
6	M10x1.5x35 SHCS (For Wrist Mounting)
7	M10x1.5x25 SHCS
8	10x25 Dowel Pin



## PLAY70x2 EOAT KIT - 88001906

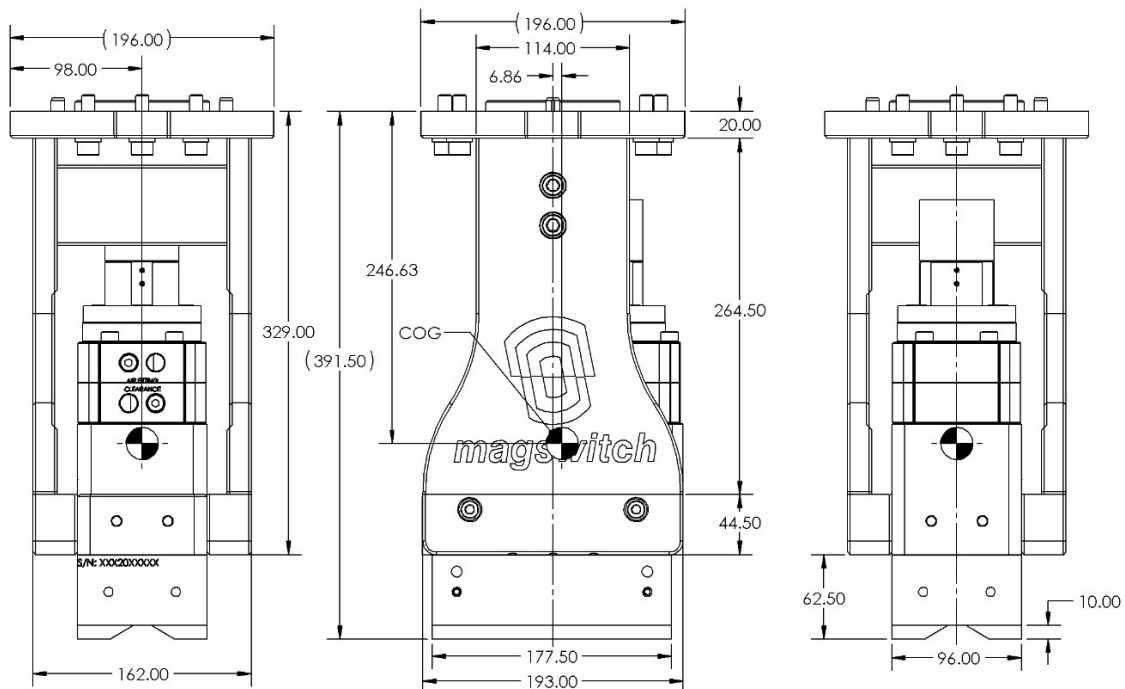
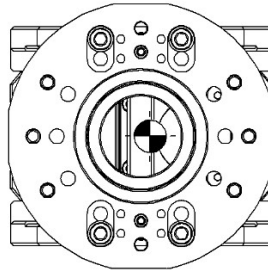
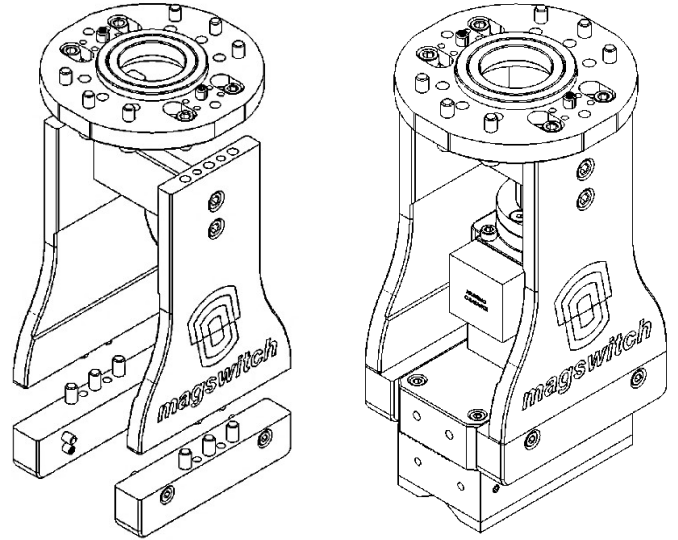
### Components and Compatible Tool:

Interface Kit	88001887
Riser Kit	88001888
PLAY70x2 Adapter Kit	88001889
PLAY70x2 (Sold Separately)	81401497

### Specifications:

Weight (EOAT Only)	18.0lb	8.20kg
Weight (With Magnet)	46.7lb	21.2kg
Footprint	7.71x7.71x15.4in	196x196x300mm

\*COG Shown Includes EOAT and Magnet Weight



## PLAY70x3 EOAT Kit - 88001907

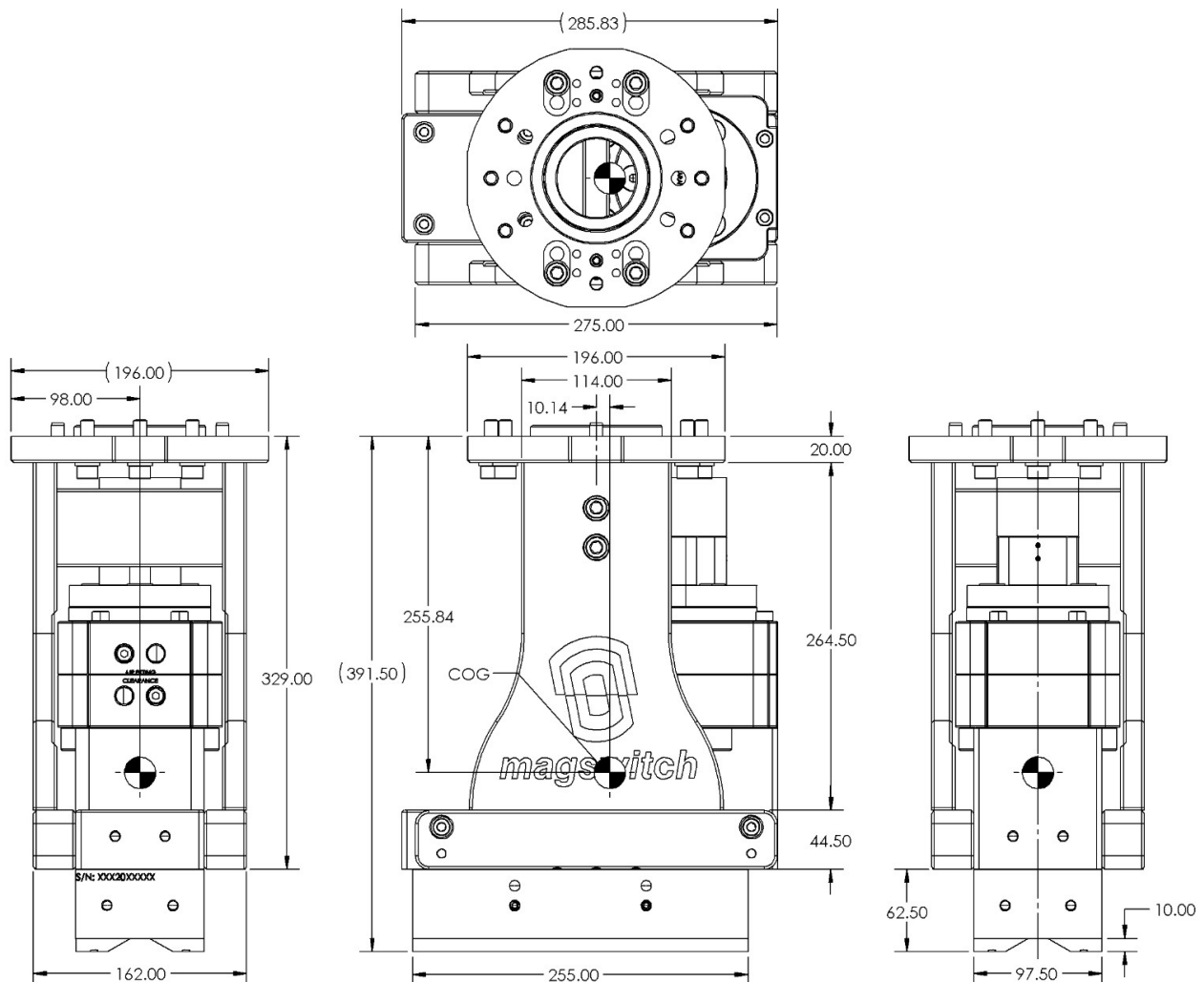
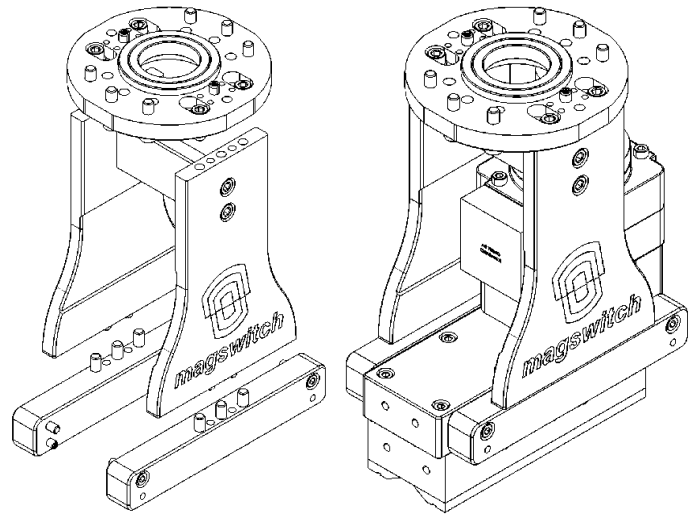
### Components and Compatible Tool:

Interface Kit	88001887
Riser Kit	88001888
PLAY70x3 Adapter Kit	88001890
PLAY70x3 (Sold Separately)	81401545

### Specifications:

Weight (EOAT Only)	19.3lb	8.77kg
Weight (With Magnet)	64.6lb	29.3kg
Footprint	7.71x11.3x15.4in	196x286x392mm

\*COG Shown Includes EOAT and Magnet Weight



## PLAY70x4 EOAT Kit - 88001908

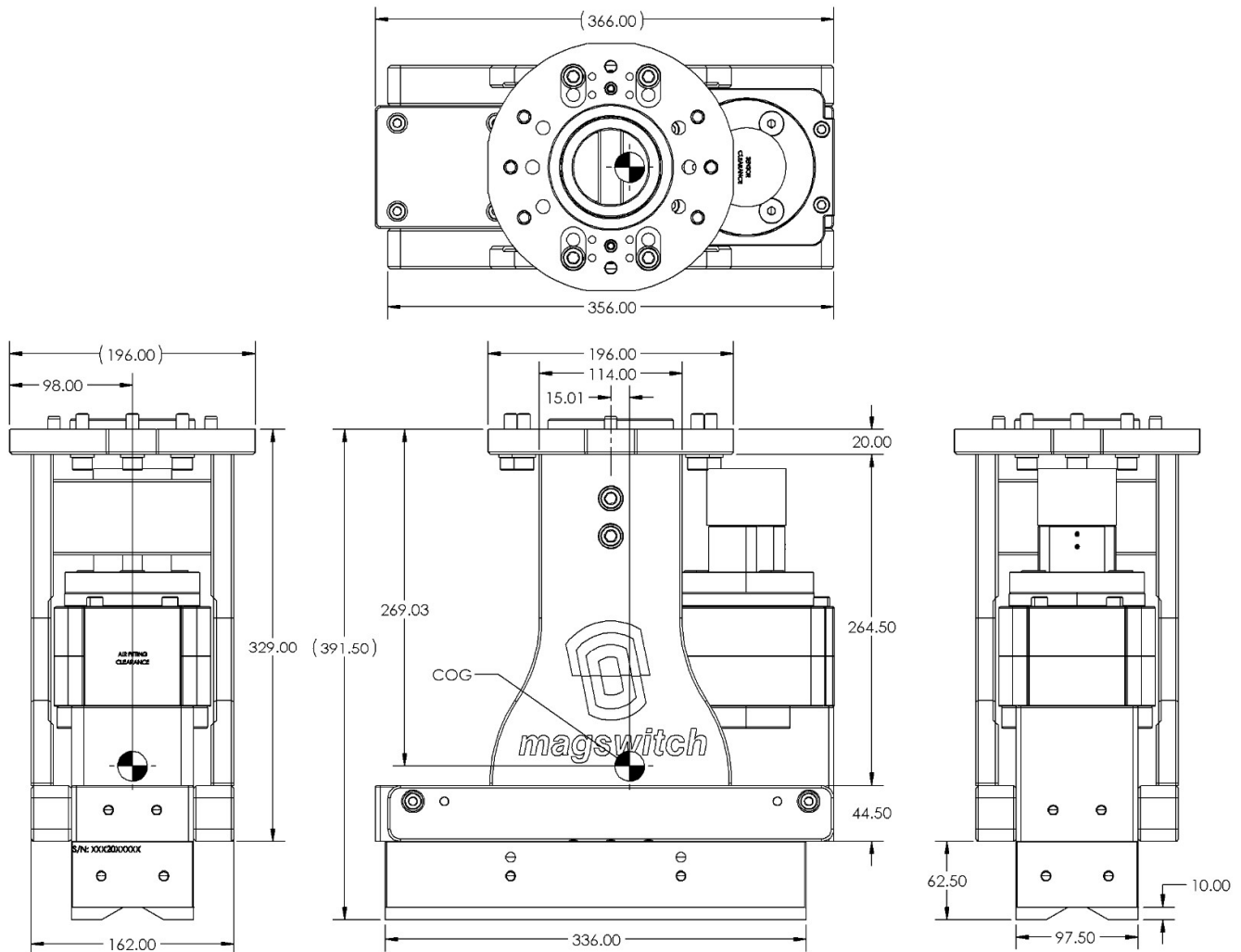
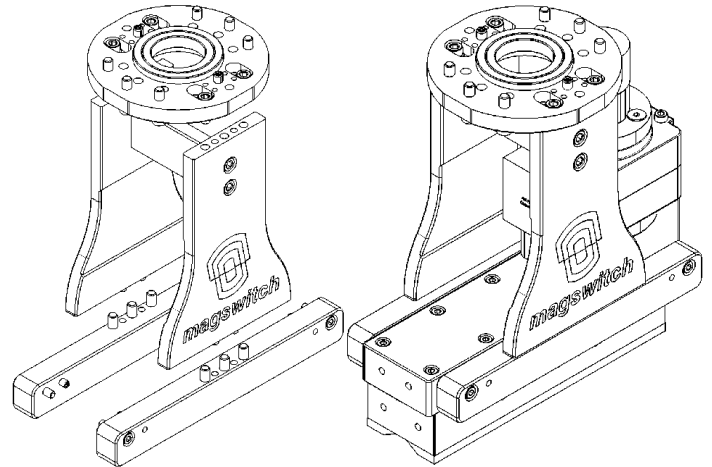
### Components and Compatible Tool:

Interface Kit	88001887
Riser Kit	88001888
PLAY70x4 Adapter Kit	88001890
PLAY70x4 (Sold Separately)	81401520

### Specifications:

Weight (EOAT Only)	20.7lb	9.41kg
Weight (With Magnet)	76.9lb	34.9kg
Footprint	7.71x14.4x15.4in	196x366x392mm

\*COG Shown Includes EOAT and Magnet Weight



## Installation Instructions

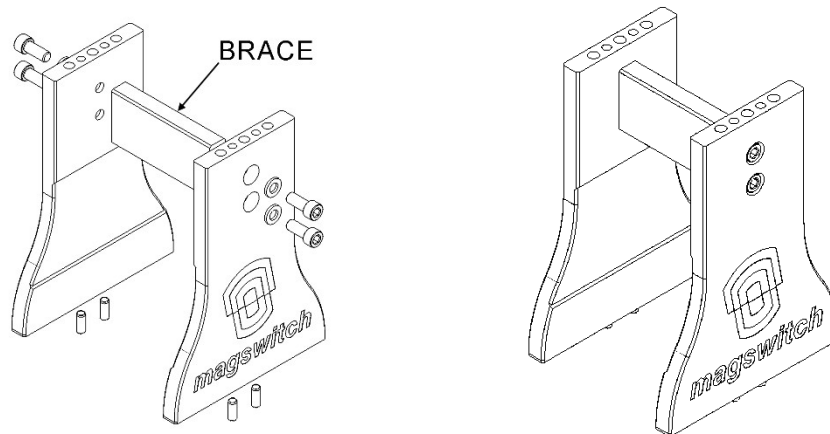
### Required Assembly Tools: (Not Included with Kits)

M6 Hex Key
M8 Hex Key
Torque Wrench
Loctite 242

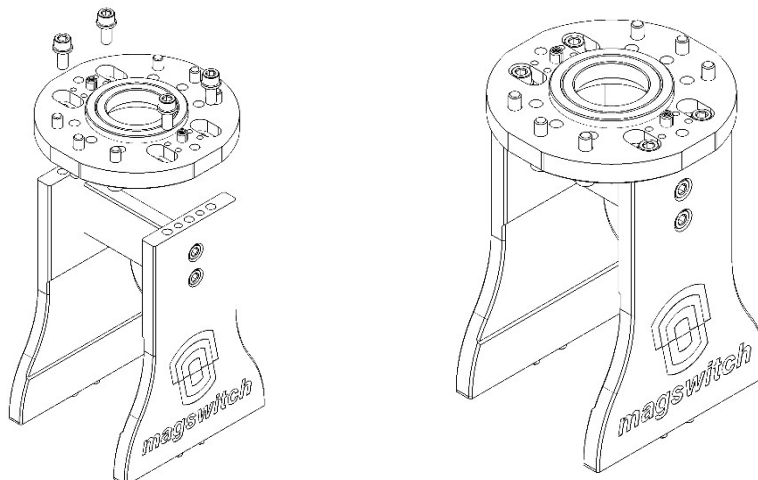
### NOTES:

- Apply Loctite 242 to all fasteners at time of assembly.
- All press fit dowel pins come pre-installed
- Some versions may have minimal clearance on actuator housing and may require a looser initial assembly before torquing all bolts.

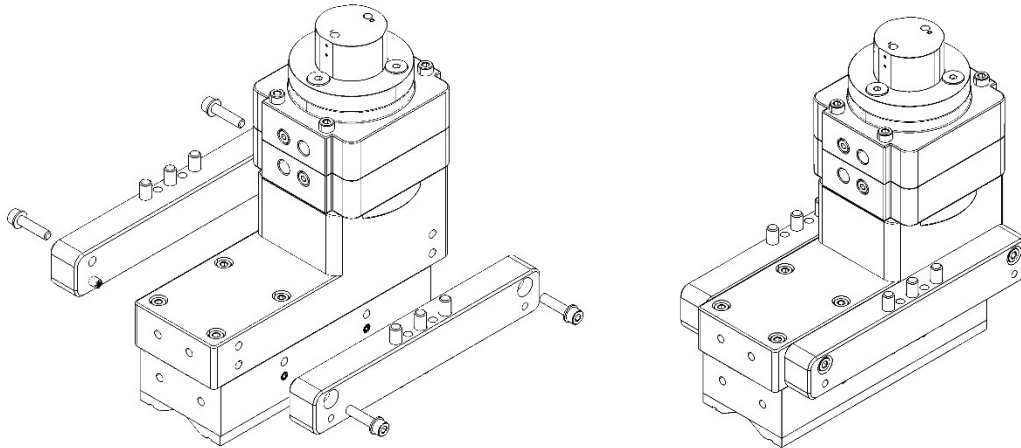
- Make sure PLAY tool is in off state.
- Assemble the Risers to the Brace using 4X M10x25 bolts and washers. The PLAY70x2 does not require the Brace to be installed, and it may interfere with ON/OFF sensors, Brace is required on PLAY70x3 and PLAY70x4.



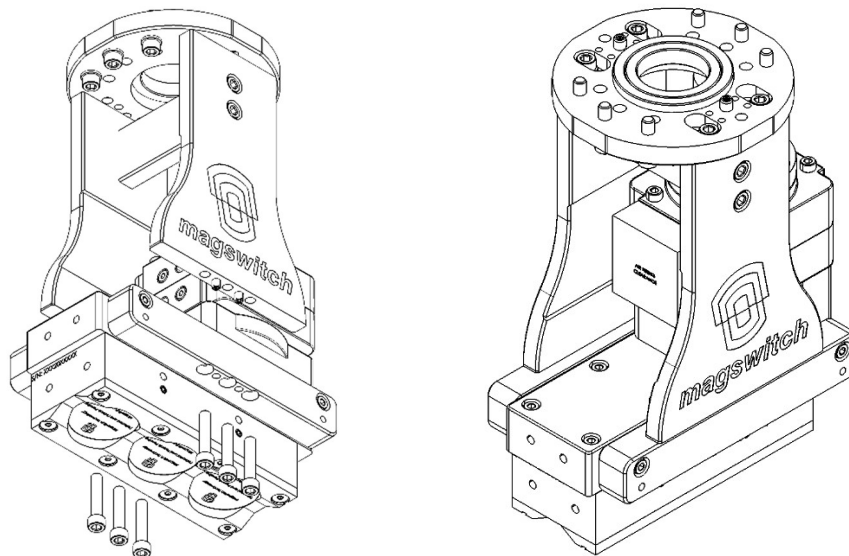
- Secure the Interface plate to the Risers using 4X M10x25 bolts and 4X press fit 10mm dowels. NOTE: Boss Pucks will be packaged separately. Only one Boss Puck can be installed at a time.



- Secure the tool specific adapters to the sides of the corresponding tool using 4X M8x35 Bolts, washers, and 4X press fit 10mm dowels.



- Install the Riser and Interface assembly on the Adapters and secure with 6 M10 bolts from the bottom.



- Torque All M8 Socket Head Fasteners to 25Nm. Torque All M10 Socket Head Fasteners to 50Nm.