

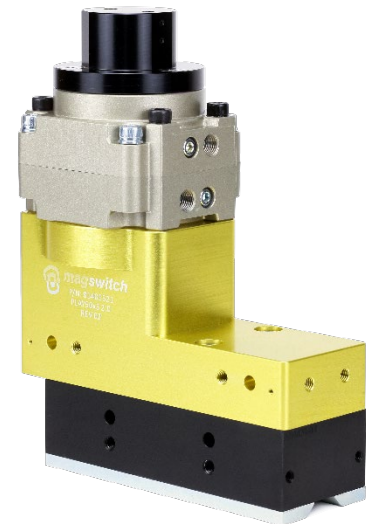
PLAY50X3 2.0 SH | P/N: 81401738

Summary

Magswitch 2.0 LAY series of magnetic grippers for robotic automation utilize magnets arranged in a linear array to extend the depth and footprint of the magnetic field. The PLAY 50x3 SH magnetic gripper adds the capability of handling high temperature parts. The large footprint of the array magnets provide stability when handling long parts or large assemblies. Custom pole shoes can be added to allow optimal holding force for parts that are not flat or have irregular features. The PLAY 50x3 2.0 SH high temperature magnet is a great tool for handling tubes, billets, axles, rails and large castings.

Specifications

Maximum Breakaway Force ^{1,2,4}	6722	N		
Maximum Shear ^{1,2,4}	1716	N		
Minimum Thickness for De-Stack ³	0.5	in	12.7	mm
Overall Height (Max)	10.0	in	254.8	mm
Overall Length	8.1	in	205.9	mm
Overall Width	3.9	in	98.3	mm
Net Weight	19.84	lbs	9.0	kg
Air Port Threads	1/4 Rc			
Maximum Application Temperature	302	F	150	C
Magnetic Pole Footprint	2.8x7.17	in	71.1x182.0	mm
Max Allowable Pressure	145	psi	1.00	MPa



Material Thickness - mm (in)	1.5 (0.059)	1.9 (0.075)	2.7 (0.106)	3 (0.118)	3.5 (0.138)	4.76 (0.187)	6.35 (0.250)	9.53 (0.375)	12.7 (0.500)	19.05 (0.750)	50 (1.969)
Maximum Force ⁵ (N)	1017	1393	1796	2006	2336	3470	4731	6116	6416	6720	6722
Required Air Pressure - bar (psi)	3.1 (45)	2.8 (40)	2.6 (38)	2.4 (35)	2.4 (35)	2.1 (30)	2.1 (30)	1.9 (28)	1.9 (28)	1.7 (25)	1.7 (25)

¹ Determined in laboratory environment on 2" thick SAE1018 Steel with surface roughness 63 micro inches. Many factors contribute to the actual breakaway force and safe working load in each application. Consult a Magswitch Applications Engineer and test the Magswitch in each application before deployment.

² All data applies to standard tool.

³ Determined with SAE1018 Steel L=200mm W=200mm.

⁴ Values may vary by +/- 5%.

⁵ Maximum forces listed above are not safe lifting forces. Designer must take into account safety factor when specifying tool. Magswitch recommends SWL = 5:1 for most applications.

$$SWL \text{ (Safe Working Load)} = \frac{\text{Maximum Force}^5}{\text{Safety Factor} (\geq 5)}$$



MAGSWITCH PLAY50X3 2.0 SH

P/N: 81401738

+ 1(303) 468.0662

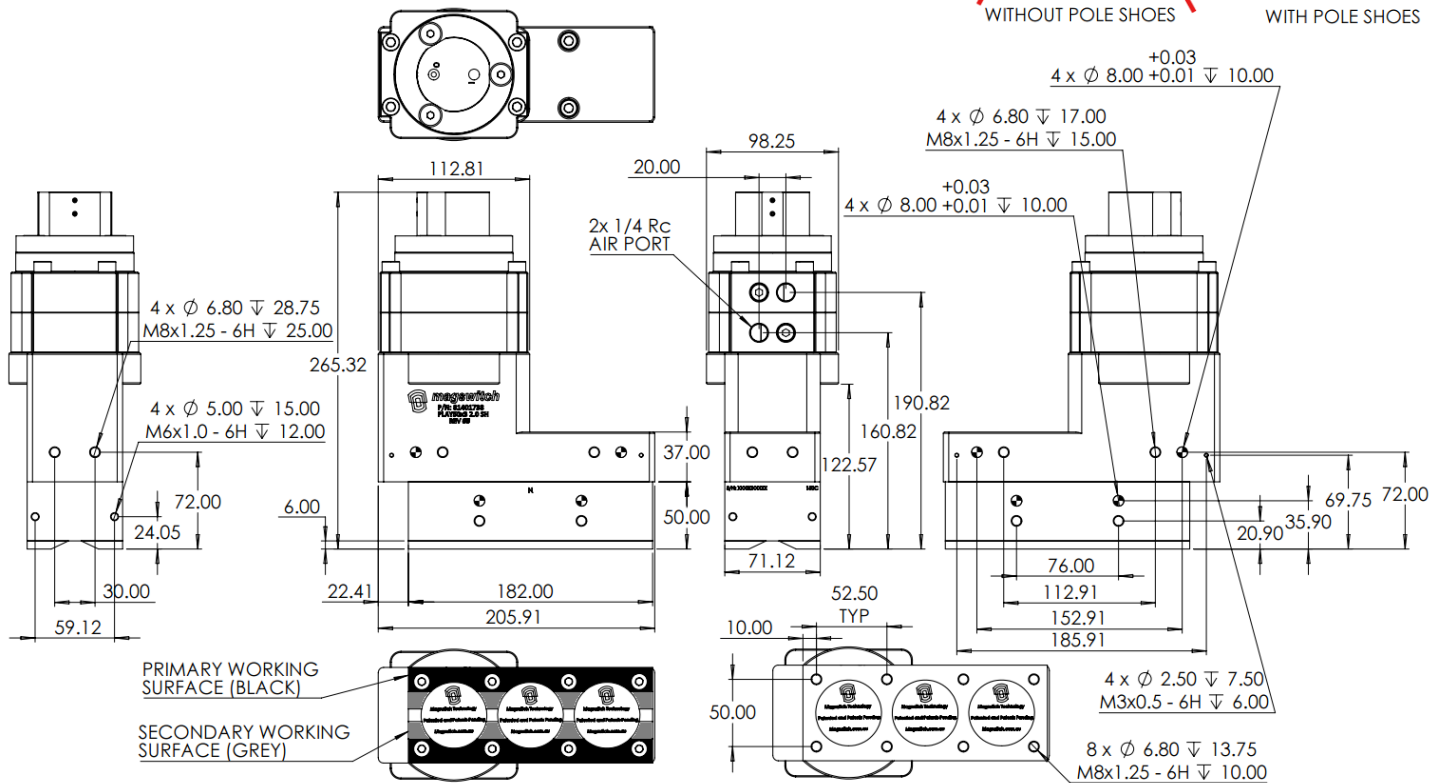
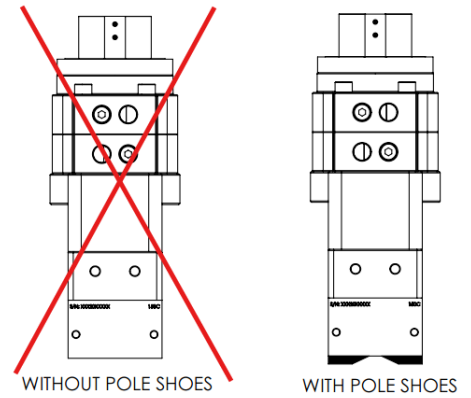
magswitch.com

Pole shoes required for operation and included in package

Standard kits available:

PSK, PLAY50X3 2.0, STANDARD, HIGH HEAT, NICKEL	88002150
------------------------------------------------	----------

WARNING!
Do Not Operate Unless In Contact With Ferrous Target





MAGSWITCH PLAY50X3 2.0 SH
P/N: 81401738
+ 1(303) 468.0662
magswitch.com

Center of Mass

