

## PLAY50 EOAT 2.0

### Summary

The PLAY50 EOAT 2.0 is modular End of Arm Tooling for PLAY50-Series magnets (PLAY50x2, PLAY50x3, PLAY50x4). Its single magnet EOAT allows for quick installation setup on industrial robots. The EOAT consists of 3 sections: Interface, Risers, and Adapters. The Cradle (Interface/Riser assembly) gives common mounting for the tool specific Adapters allowing for easy removing and tool swapping.

Robot Interface Plates and Risers can be custom made for unique applications. Please reach out to Magswitch for more information.



### Specifications

Net Weight (Cradle Only)	10.7lb	4.87kg
Footprint (Cradle Only)	7.71x7.71x9.79in	196x196x248mm

\*See Tool Specific Pages for Complete EOAT Weights and Sizes

### Compatible Tools

PLAY50x2 2.0	81401515
PLAY50x3 2.0	81401521
PLAY50x4 2.0	81401488

### Complete Kits

PLAY50x2 Cradle and Adapters	88002004
PLAY50x3 Cradle and Adapters	88002005
PLAY50x4 Cradle and Adapters	88002006

\*Magnets Sold Separately

### Modular Kits

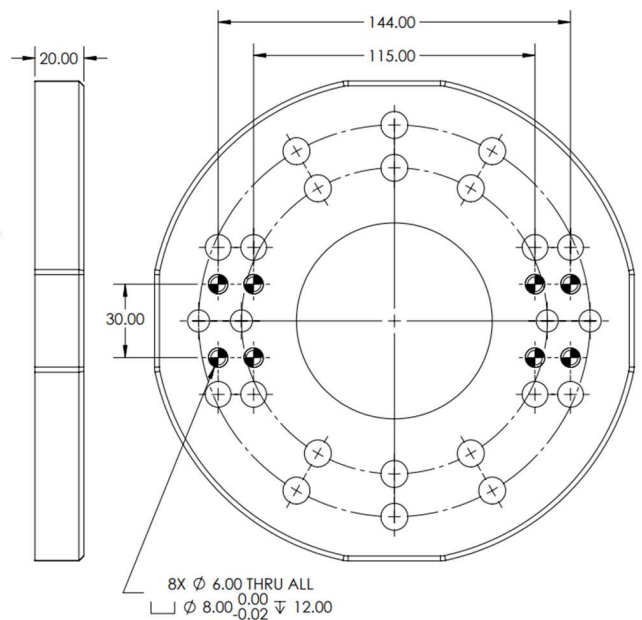
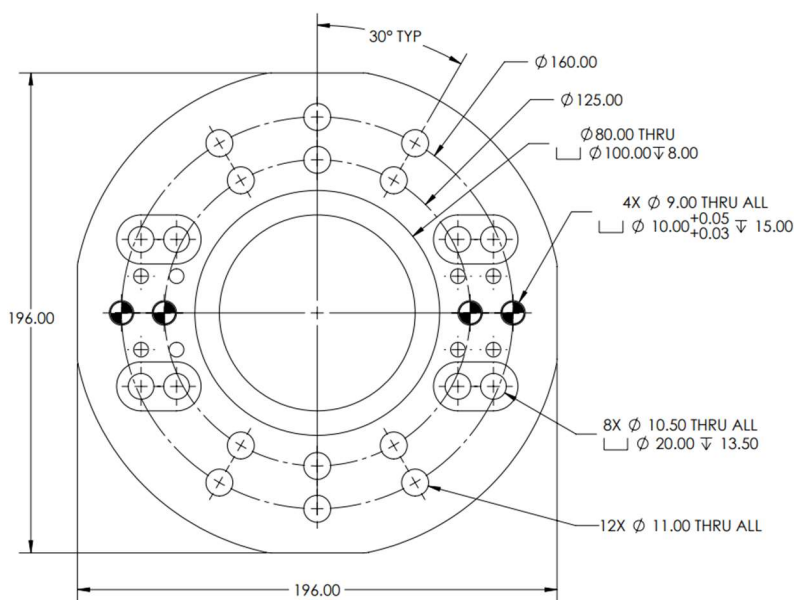
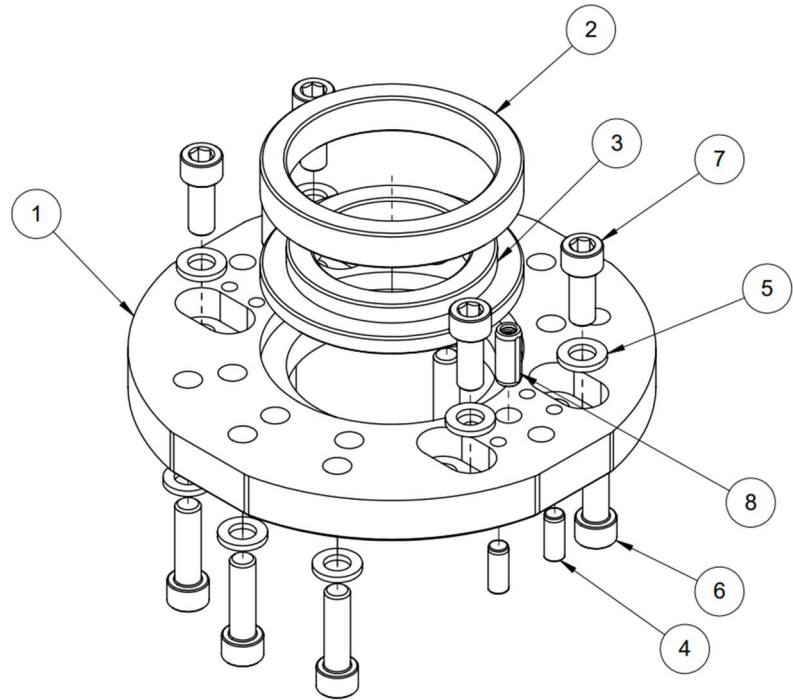
Interface Plate 125/160 B.C.	88001996
PLAY50 Risers (All Tools)	88001997
PLAY50 Cradle (Interface and Risers)	88002007
PLAY50x2 Adapters	88001998
PLAY50x3 Adapters	88001999
PLAY50x4 Adapters	88002000
PLAY50x2 Adapters and Risers (No Interface Plate)	88002001
PLAY50x3 Adapters and Risers (No Interface Plate)	88002002
PLAY50x4 Adapters and Risers (No Interface Plate)	88002003

## Interface Plate Kit - 88001996

Standard Interface plate includes a 125 / 160 B.C. pattern that can be used on ISO 125 and ISO 160 robot wrists. The Kit also contains an 80mm and 100mm Boss Puck for wrist alignment.

### Kit Components:

ITEM No.	Description
1	125 / 160 B.C. Interface Plate
2	100x16 Boss Puck
3	80x8 To 100x8 Boss Puck
4	8x20 Dowel Pin
5	M10 Washer
6	M10x1.5x35 SHCS (For Wrist Mounting)
7	M10x1.5x25 SHCS
8	10x25 Dowel Pin



## PLAY70x2 EOAT KIT - 88002004

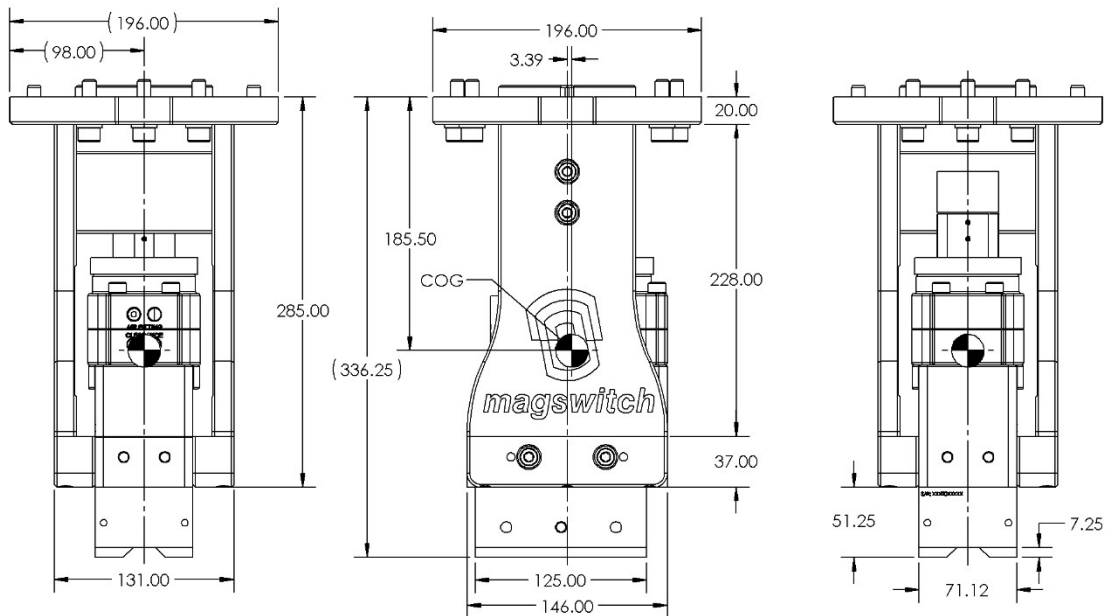
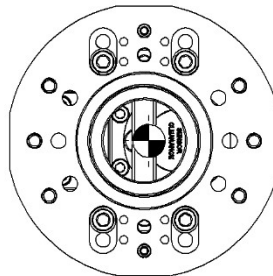
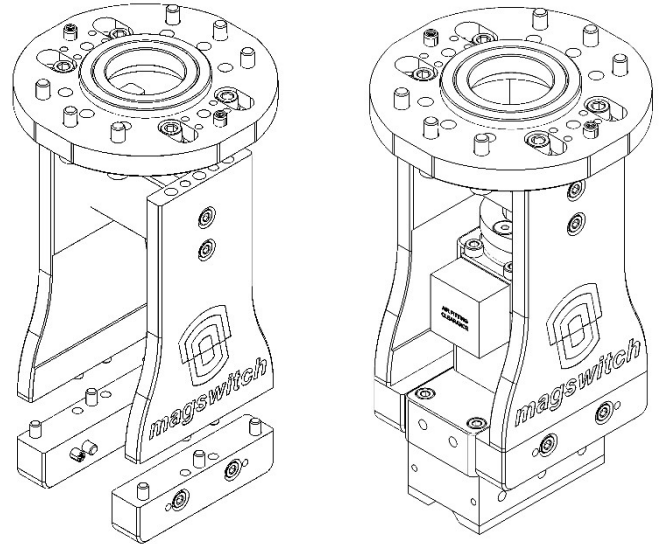
### Components and Compatible Tool:

Interface Kit	88001996
Riser Kit	88001997
PLAY50x2 Adapter Kit	88001998
PLAY50x2 (Sold Separately)	81401515

### Specifications:

Weight (EOAT Only)	13.0lb	5.9kg
Weight (With Magnet)	27.3lb	12.4kg
Footprint	7.71x7.71x13.2in	196x196x336mm

\*COG Shown Includes EOAT and Magnet Weight



## PLAY70x3 EOAT Kit - 88002005

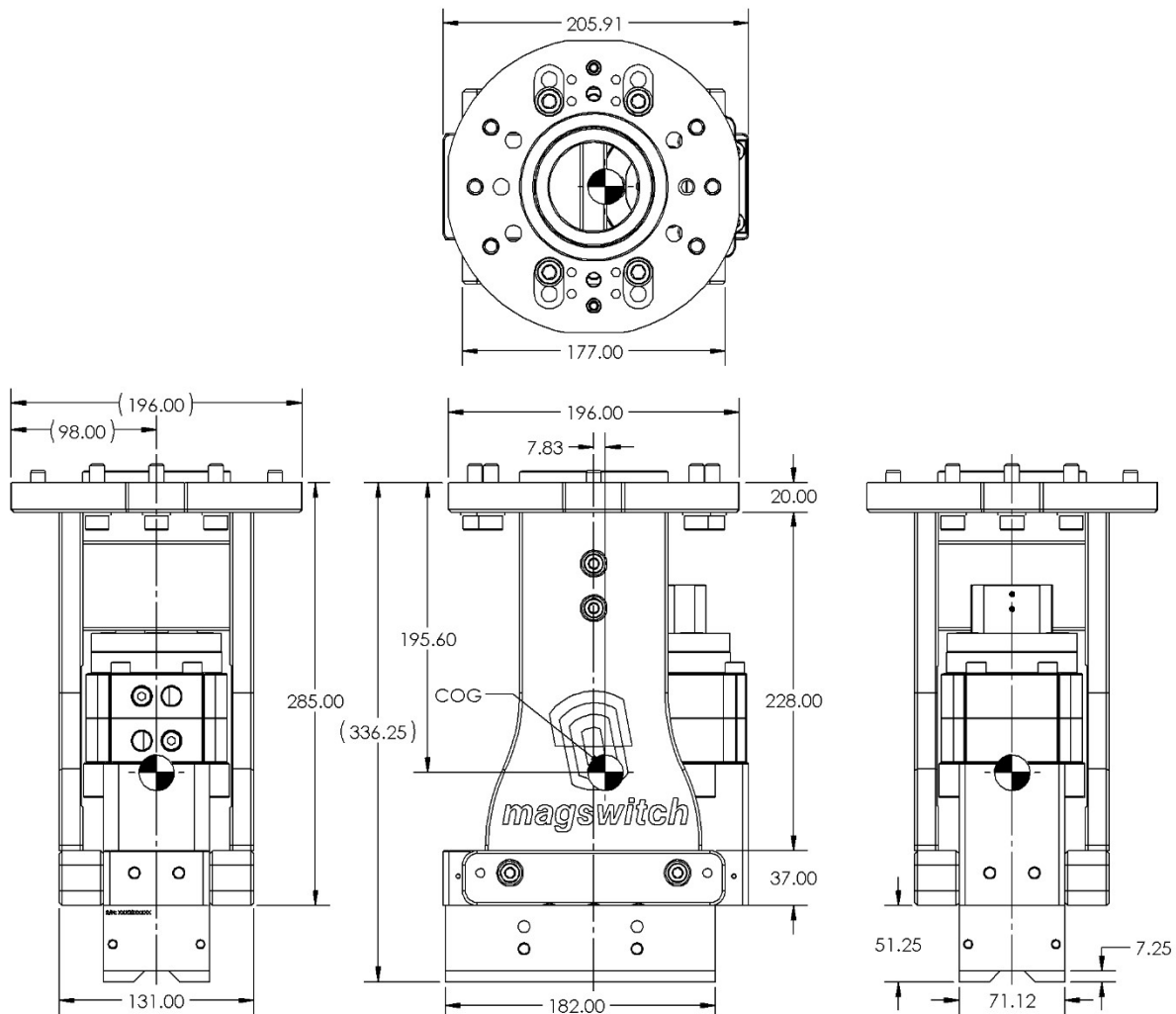
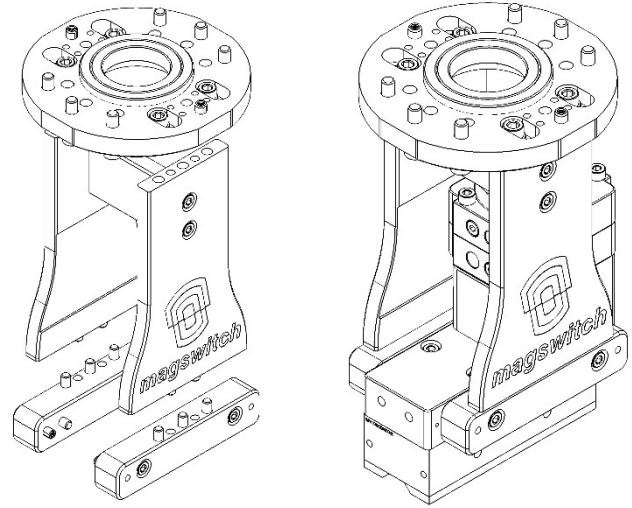
### Components and Compatible Tool:

Interface Kit	88001996
Riser Kit	88001997
PLAY50x3 Adapter Kit	88001999
PLAY50x3 (Sold Separately)	81401521

### Specifications:

Weight (EOAT Only)	13.4lb	6.08kg
Weight (With Magnet)	33.3lb	15.1kg
Footprint	7.71x8.11x13.2in	196x206x336mm

\*COG Shown Includes EOAT and Magnet Weight



## PLAY70x4 EOAT Kit - 88002006

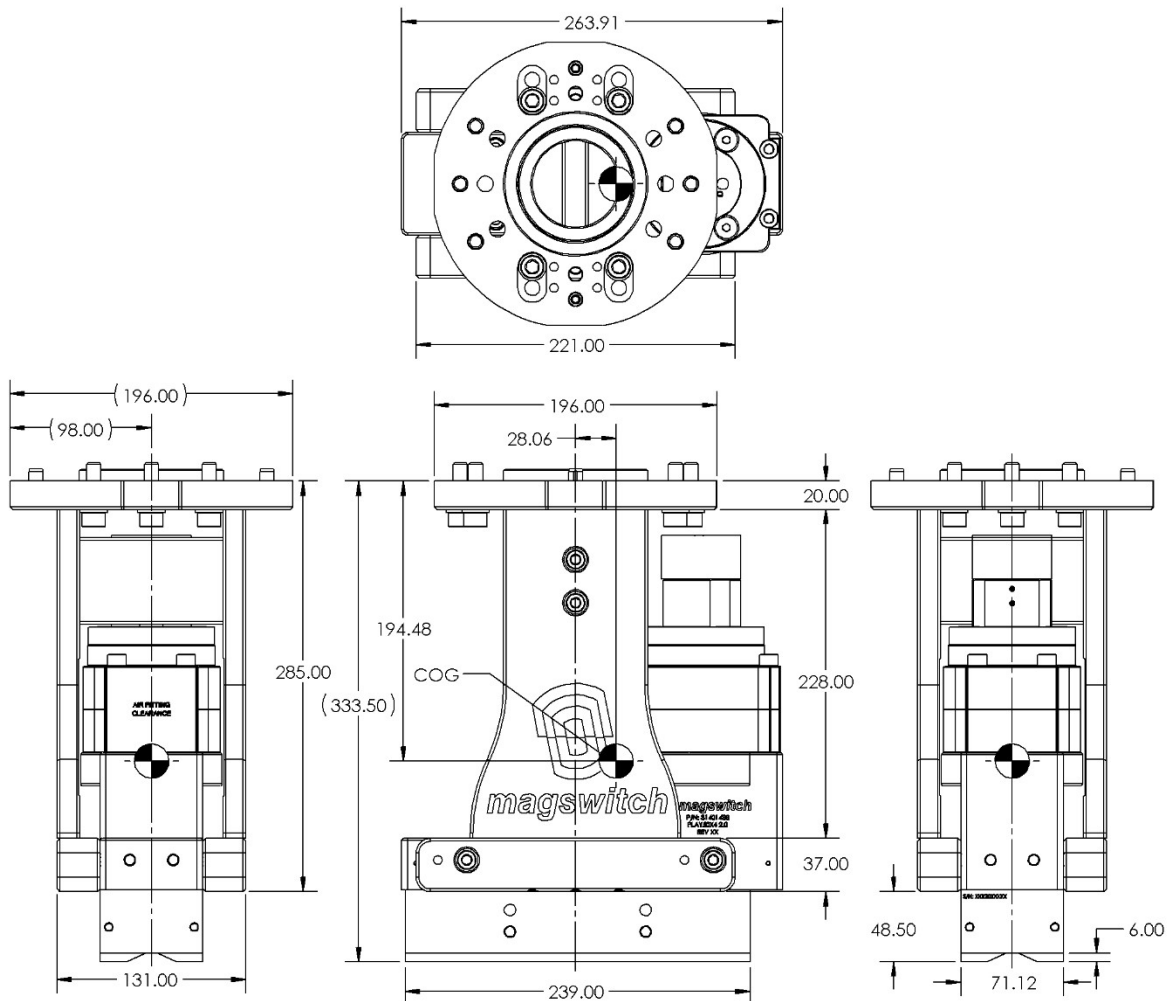
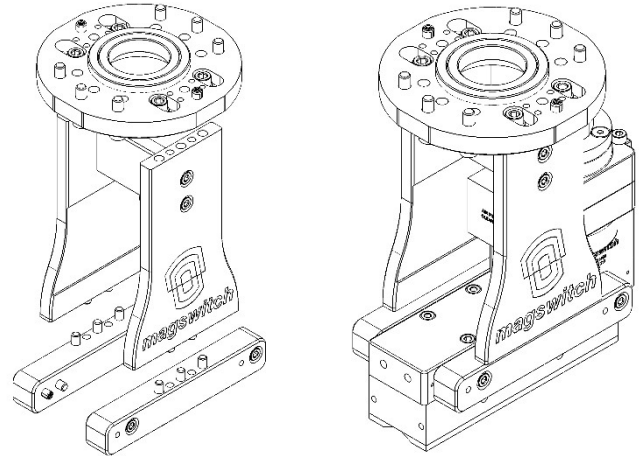
### Components and Compatible Tool:

Interface Kit	88001996
Riser Kit	88001997
PLAY50x4 Adapter Kit	88002000
PLAY50x4 (Sold Separately)	81401488

### Specifications:

Weight (EOAT Only)	14.0lb	6.35kg
Weight (With Magnet)	39.0lb	17.7kg
Footprint	7.71x10.4x13.1in	196x264x334mm

\*COG Shown Includes EOAT and Magnet Weight



## Installation Instructions

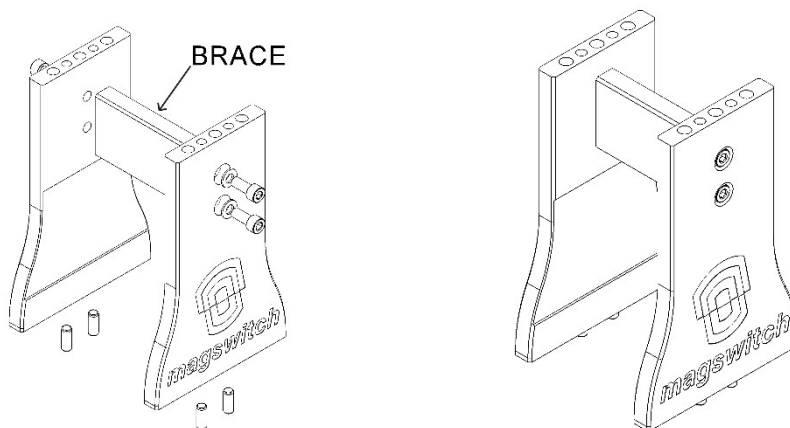
### Required Assembly Tools: (Not Included with Kits)

M6 Hex Key
M8 Hex Key
Torque Wrench
Loctite 242

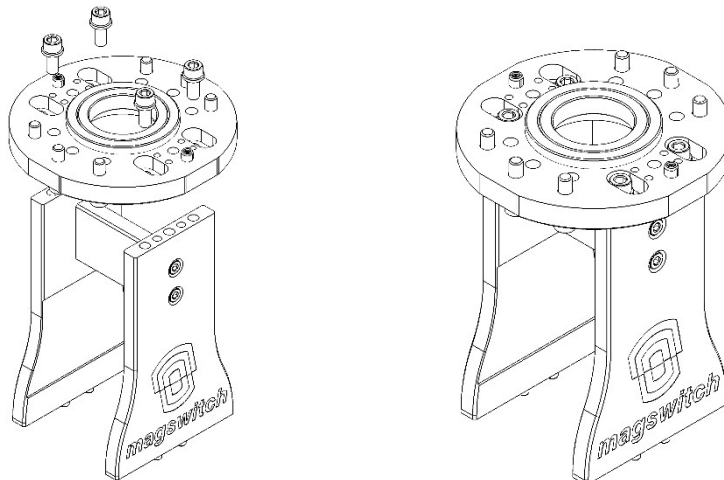
### NOTES:

- Apply Loctite 242 to all fasteners at time of assembly.
- All press fit dowel pins come pre-installed
- Some versions may have minimal clearance on actuator housing and may require a looser initial assembly before torquing all bolts.

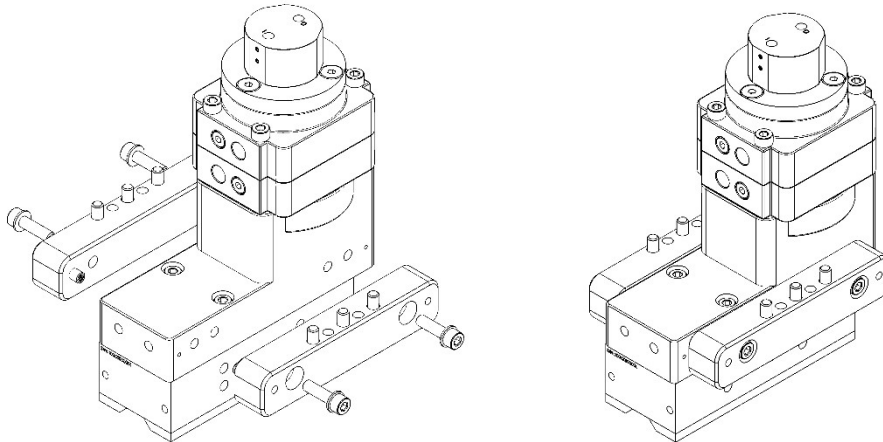
- Make sure PLAY tool is in off state.
- Assemble the Risers to the Brace using 4X M8x20 bolts and washers. The PLAY50x2 does not require the Brace to be installed, and it will interfere with ON/OFF sensor cap, Brace is required on PLAY50x3 and PLAY50x4.



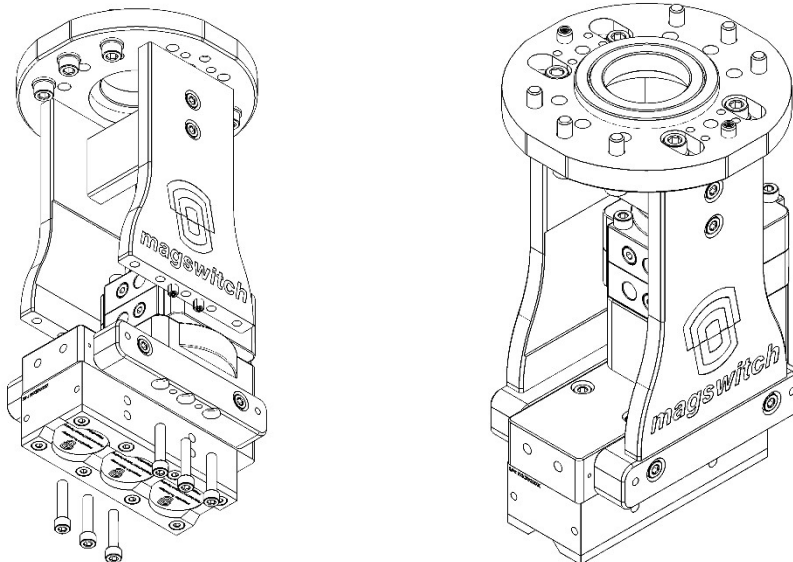
- Secure the Interface plate to the Risers using 4X M10x25 bolts and 4X press fit 10mm dowels. NOTE: Boss Pucks will be packaged separately. Only one Boss Puck can be installed at a time.



- Secure the tool specific adapters to the sides of the corresponding tool using 4X M8x30 Bolts, washers, and 4X press fit 8mm dowels. NOTE: The PLAY50x4 Adapters are asymmetric, make sure holes align before install.



- Install the Riser and Interface assembly on the Adapters and secure with 6 M8x40 bolts from the bottom. NOTE: The PLAY50x2 Adapters will use the outer holes on the risers for mounting.



- Torque All M8 Socket Head Fasteners to 25Nm. Torque All M10 Socket Head Fasteners to 50Nm.