



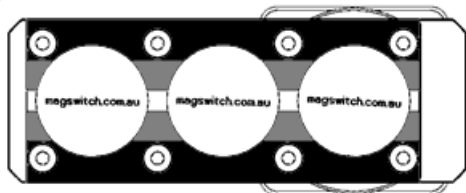
Magswitch Technology, Inc.  
1355 Horizon Avenue  
Lafayette, CO 80026  
Magswitch.com.au  
303-468-0662

## Magswitch PLAY50x3 MDC

### P/N: 8140393

Magswitch LAY series utilizes field interaction between individual magnets to increase depth of field and spread the attractive force over a larger footprint. This allows for greater working loads and increased control over larger work pieces. With customizable pole shoes to fit almost any application, the LAY is a great all around tool that is perfect for picking pipe and round as well as large plate steel.

**WARNING!**  
**Do Not Operate Unless In**  
**Contact With Ferrous Target**



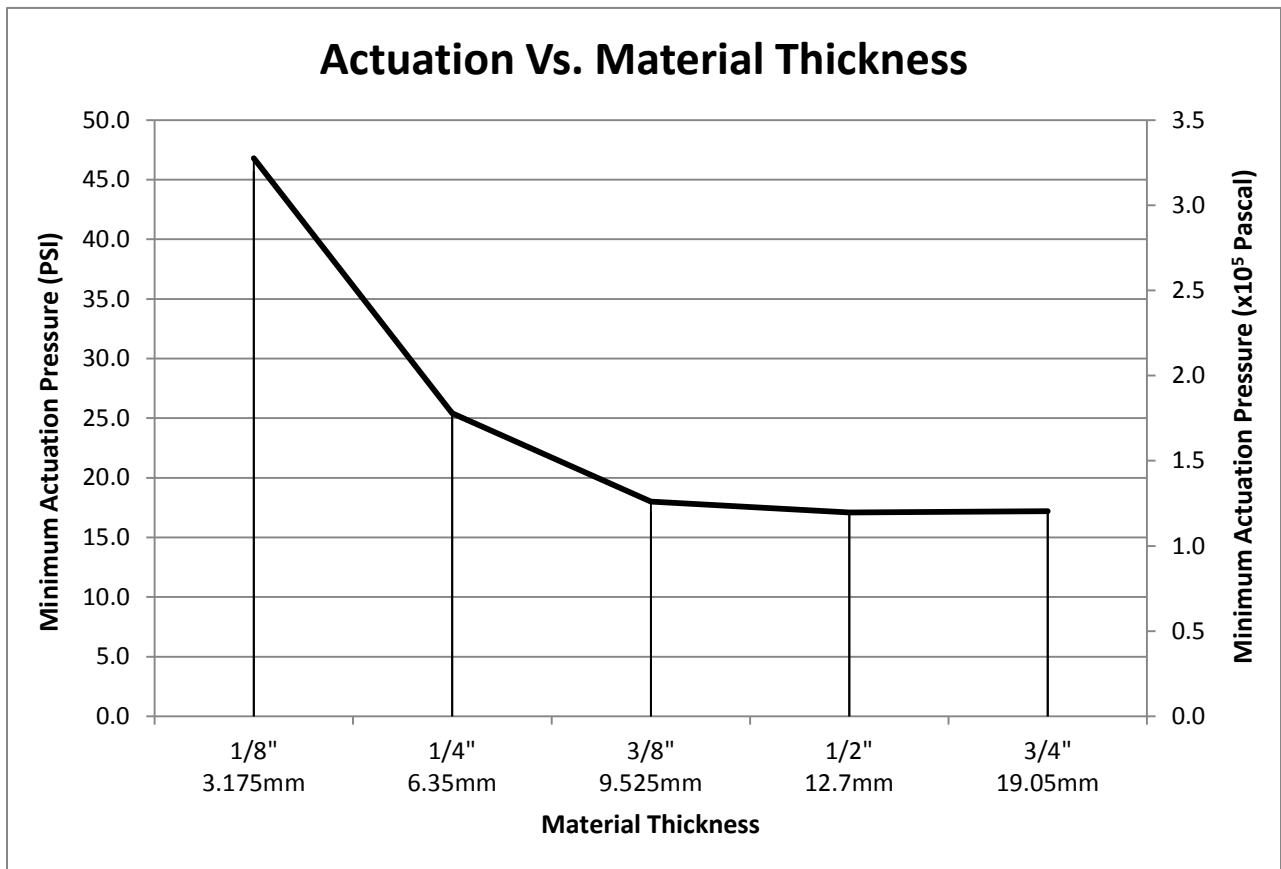
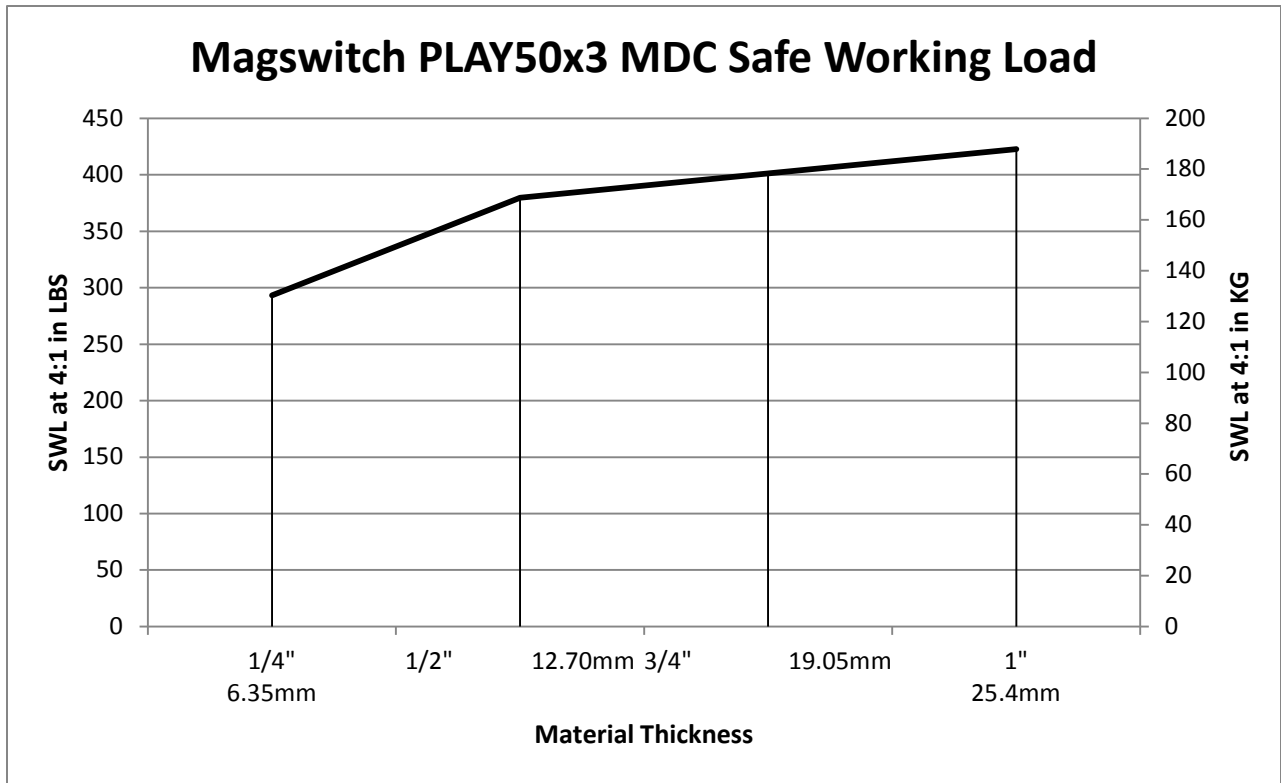
**WORKING SURFACE**  
**BLACK=BEST**  
**GRAY=MODERATE**

SPECIFICATIONS	
<b>P/N: 8140393 - MAGSWITCH PLAY50x3 MDC</b>	
Max Breakaway*	1652 lbs/751 kg
Working Load 4:1*	413 lbs/187 kg
Full Saturation Thickness	1/2" / 12.7mm
Max Safe Shear*	169 lbs
Minimum Thickness for De-Stack	1/2" / 12.7mm
Min Actuation Pressure	17.1 psi/1.2x10 <sup>5</sup> pa
Max Actuation Pressure	145 psi/1x10 <sup>6</sup> pa
Net Weight	17.4 lbs/7.9 kg
Air Port Thread	Rc 1/4
Mounting Thread	M8x1.25
Custom Pole Shoe Mount Thread	M8X1.25X10mm
Overall Height	253.82 mm
Magnetic Pole Footprint	165.80x71.12 mm
Actuator Part Number	280018

\* Max Breakaway determined in laboratory environment on 2" thick SAE1018 Steel with surface roughness 63 micro inches. Many factors contribute to the actual breakaway force in each application. Always test the magswitch in each application before deployment. Refer to the magswitch information booklet for more information.

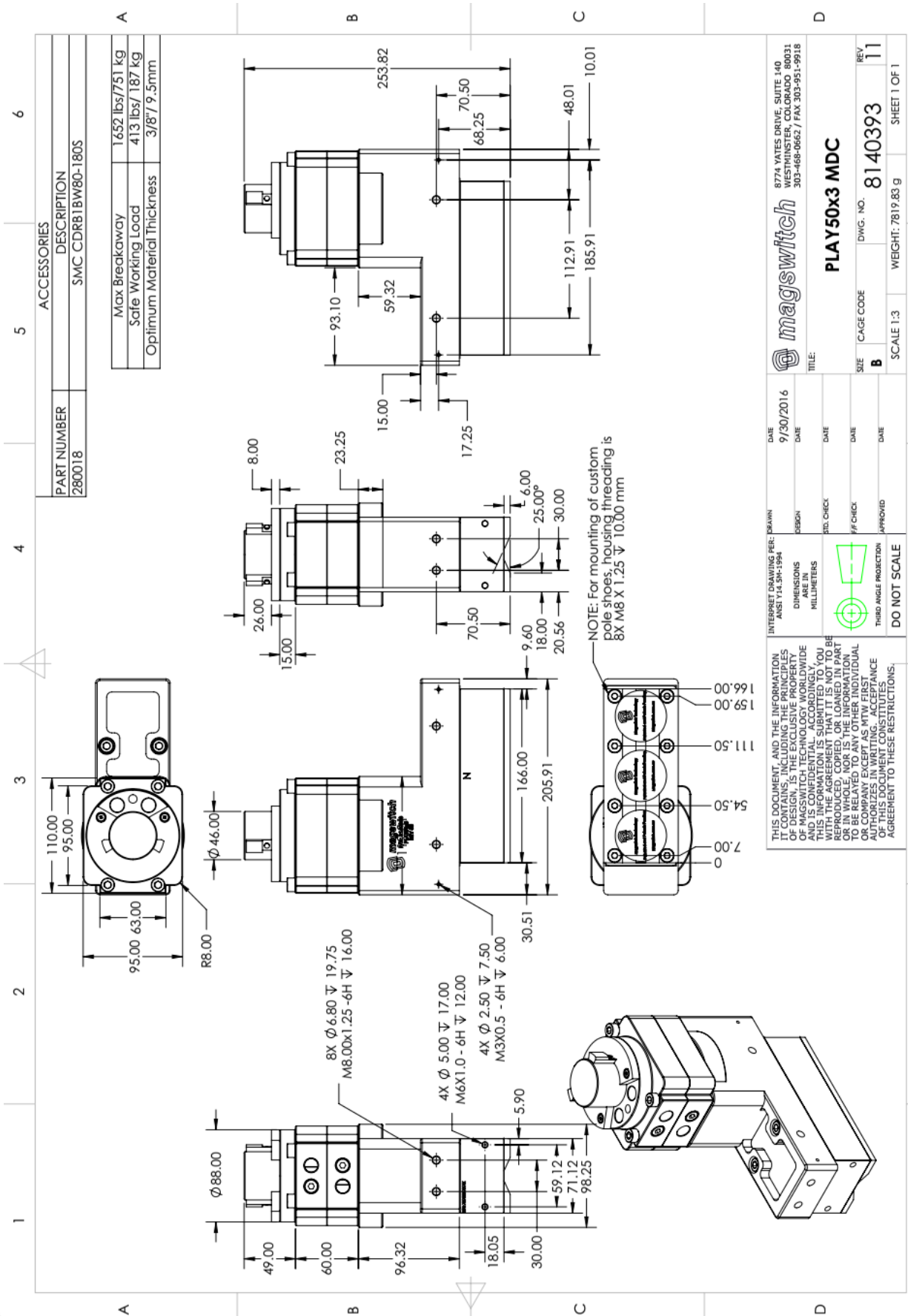
Part Number 110646  
Revision Date: Sept. 30, 2016





\* Max Breakaway determined in laboratory environment on 2" thick SAE1018 Steel with surface roughness 63 micro inches. Many factors contribute to the actual breakaway force in each application. Always test the magswitch in each application before deployment. Refer to the magswitch information booklet for more information.





ACCESSORIES	
PART NUMBER	DESCRIPTION
280018	SMC CDRB1BW80-180S

Max Breakaway	1652 lbs/751 kg
Safe Working Load	413 lbs/187 kg
Optimum Material Thickness	3/8" / 9.5mm

		DATE: 9/30/2016	
TITLE: <b>PLAY50x3 MDC</b>		DESIGN: _____	
SIZE: <b>B</b>	CAGE CODE: _____	DATE: _____	DATE: _____
DWG. NO: <b>8140393</b>	SCALE: 1:3	DATE: _____	DATE: _____
WEIGHT: 7819.83 g	SHEET 1 OF 1	DATE: _____	DATE: _____

INTERPRET DRAWING PER: DRAWN _____	
ANSI Y14.5M-1994	DATE: _____
DIMENSIONS IN MILLIMETERS	DATE: _____
	DATE: _____
THIRD ANGLE PROJECTION	DATE: _____
<b>DO NOT SCALE</b>	DATE: _____

THIS DOCUMENT, AND THE INFORMATION IT CONTAINS, INCLUDING THE PRINCIPLES OF DESIGN, IS THE EXCLUSIVE PROPERTY OF MCGRAW-HILL CONSTRUCTION AND IS CONFIDENTIAL. ACCORDINGLY, THIS INFORMATION IS SUBMITTED TO YOU ON A CONFIDENTIAL BASIS. IT IS NOT TO BE REPRODUCED, COPIED, OR LOANED IN PART OR IN WHOLE, NOR IS THE INFORMATION TO BE RELAYED TO ANY OTHER INDIVIDUAL OR COMPANY, WITHOUT THE WRITTEN CONSENT OF MCGRAW-HILL CONSTRUCTION. THIS DOCUMENT CONSTITUTES AN AGREEMENT TO THESE RESTRICTIONS.



Part Number 110646  
Revision Date: Sept. 30, 2016