



Magswitch Technology, Inc.  
1355 Horizon Ave  
Lafayette, CO 80026  
Magswitch.com.au  
303-468-0662

## Magswitch M15AY ASC

### P/N: 8140447

Magswitch “AY” series utilizes field interaction between individual Magswitch units to manipulate magnetic field shape allowing for a deeper or shallower depth of field and increased holding in shear while utilizing a single actuator. This makes the “AY” series the perfect cost effective unit for de-stacking operations and lifting flat steel in shear.

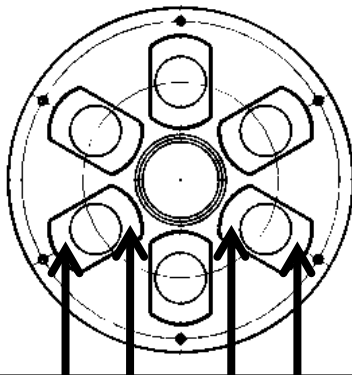


**WARNING!**  
**Do Not Operate Unless In**  
**Contact With Ferrous Target**

#### SPECIFICATIONS

##### P/N: 8140447 - MAGSWITCH M15AY ASC

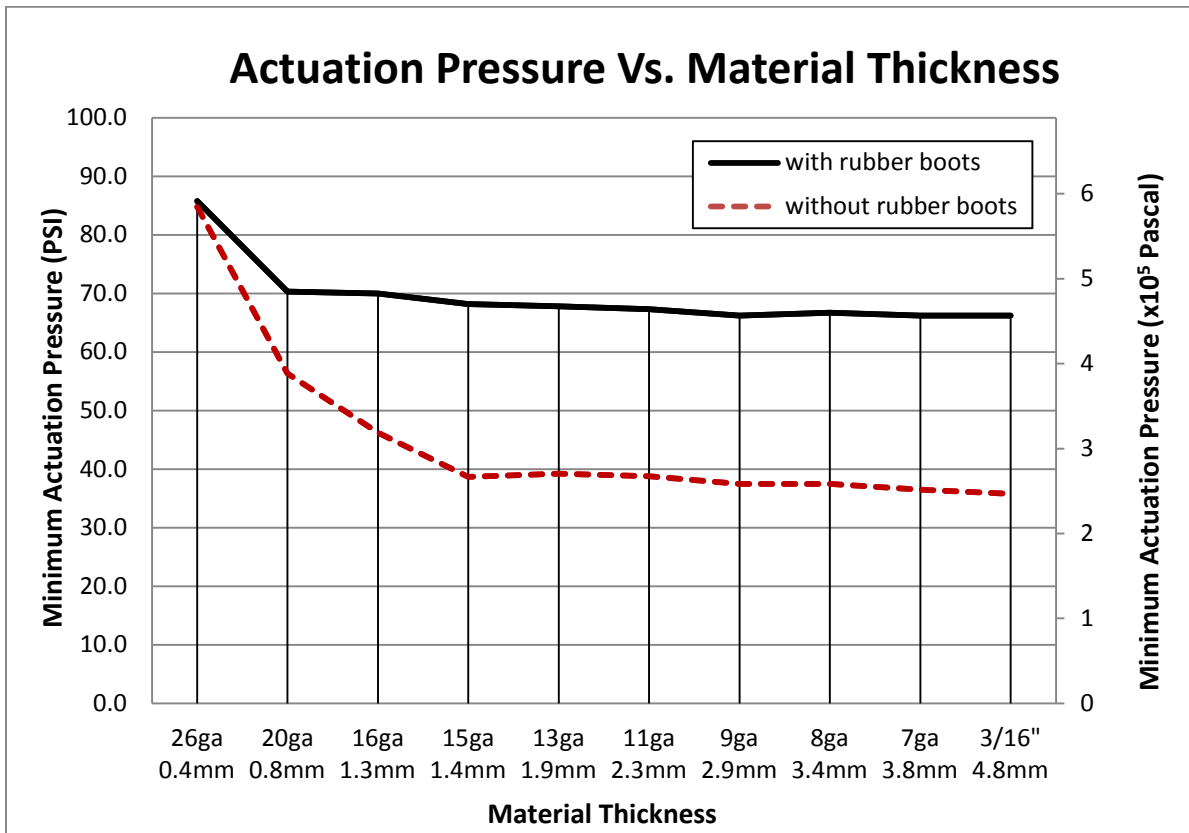
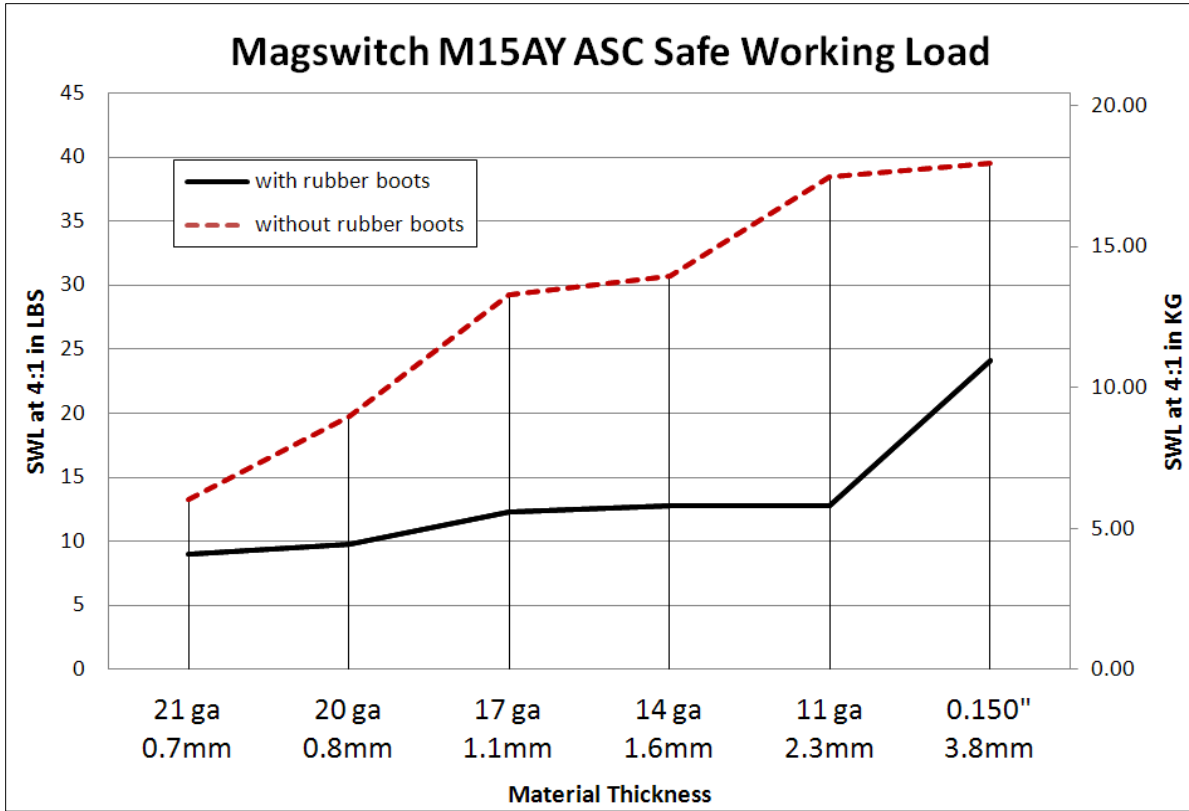
Max Breakaway*	160 lbs/72.8 kg
Safe Working Load*	40 lbs/18.2 kg
Full Saturation Thickness	12 ga/2.1mm
Max Safe Shear*	50 lbs/22.7 kg
Minimum Thickness for De-Stack	12 ga/2.7mm
Min Actuation Pressure	40 psi/2.8x10 <sup>5</sup> pa
Max Actuation Pressure	100 psi/6.9x10 <sup>5</sup> pa
Off Target Actuation Pressure	93 PSI/ 6.4x10 <sup>5</sup> pa
Net Weight	1.8 lbs/0.8 kg
Air Port Thread	M5x0.8
Mounting Thread	M6x1.0
Overall Height	111.05 mm
Magnetic Pole Footprint	80mm Diameter



**WORKING SURFACE**

Part Number 110652  
Revision Date: March 19, 2014

\* Max Breakaway determined in laboratory environment on 2" thick SAE1018 Steel with surface roughness 63 micro inches. Many factors contribute to the actual breakaway force in each application. Always test the magswitch in each application before deployment. Refer to the magswitch information booklet for more information.

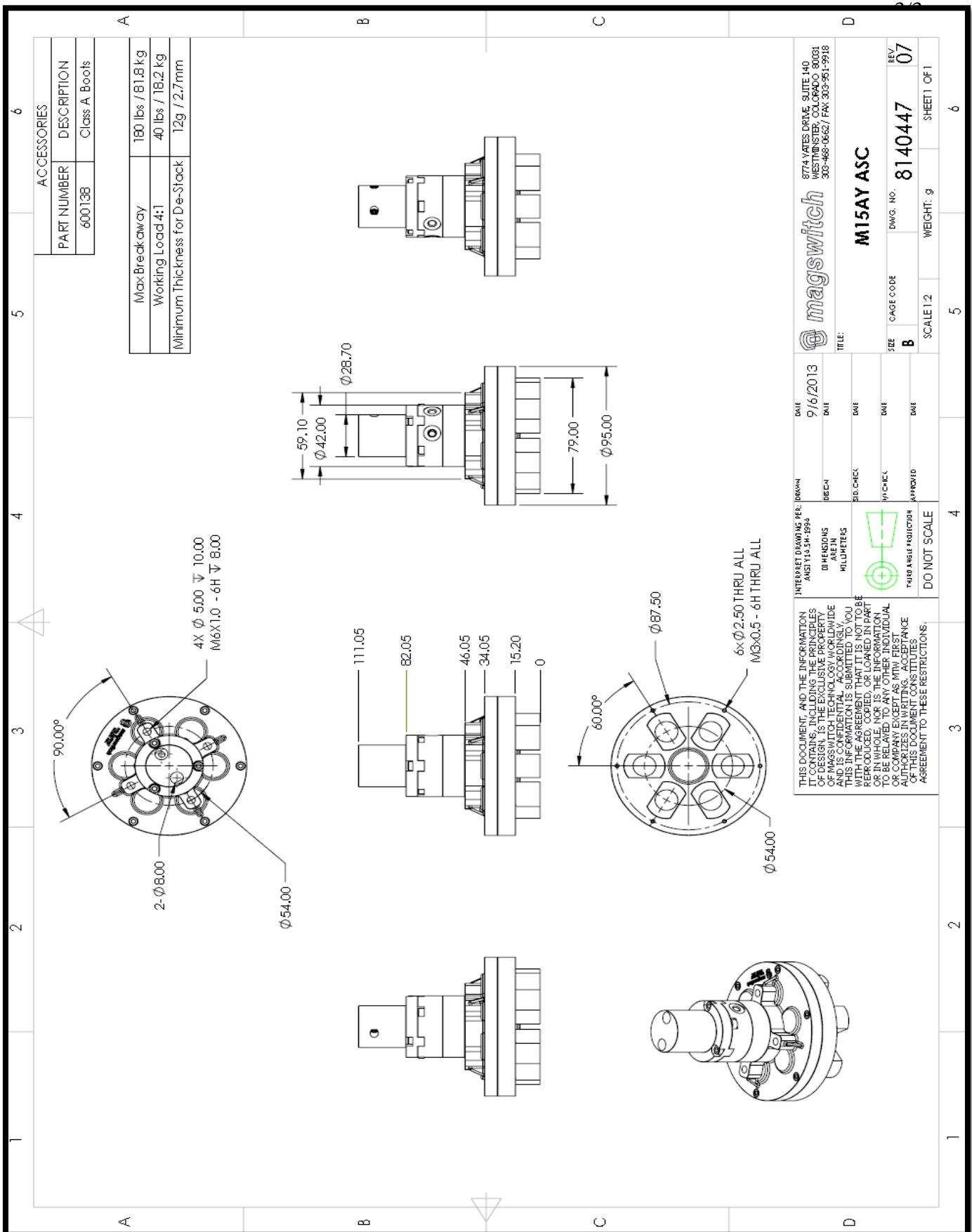


Part Number 110652  
 Revision Date: March 19, 2014

\* Max Breakaway determined in laboratory environment on 2" thick SAE1018 Steel with surface roughness 63 micro inches. Many factors contribute to the actual breakaway force in each application. Always test the magswitch in each application before deployment. Refer to the magswitch information booklet for more information.



Part Number 110652  
Revision Date: March 19, 2014



ACCESSORIES	
PART NUMBER	DESCRIPTION
600138	Class A Boots
Max Breakaway	180 lbs / 81.8 kg
Working Load 4:1	40 lbs / 18.2 kg
Minimum Thickness for De-Stack	12g / 2.7mm

**magswitch**  
8774 YATES DRIVE, SUITE 140  
WESTFIELD, COLORADO 80081  
303-468-0662 / FAX: 303-961-9918

**M15AY ASC**

DATE: 9/6/2013  
DRAWN: ANS1 Y13.5P-189A  
CHECKED: [ ]  
DIMENSIONS IN MILLIMETERS  
TOLERANCES: [ ]  
FIRST ANGLE PROJECTION  
DO NOT SCALE

SIZE: B  
CAGE CODE: [ ]  
SCALE: 1:2  
WEIGHT: g  
REV: 07  
DWG. NO.: 8140447  
SHEET 1 OF 1