

# D85 COMPLIANCE DEVICE | P/N: 88001640

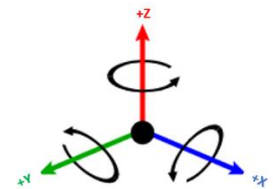
## Summary

The D85 Compliance Device is an accessory to the D85 (sold separately). The compliance device simplifies setup for the D85 by compensating for part variation and can be used for flat and near flat contact, NOT for extreme deviation (round parts). Consider units with customizable pole geometries in these scenarios instead. Angular compliance is allowed on the X and Y axes as well as vertical compression about the Z axis. The additional flexibility also improves handling of sagging sheets ensuring the maximum performance in each application. It also imparts a dampening effect against accelerations.



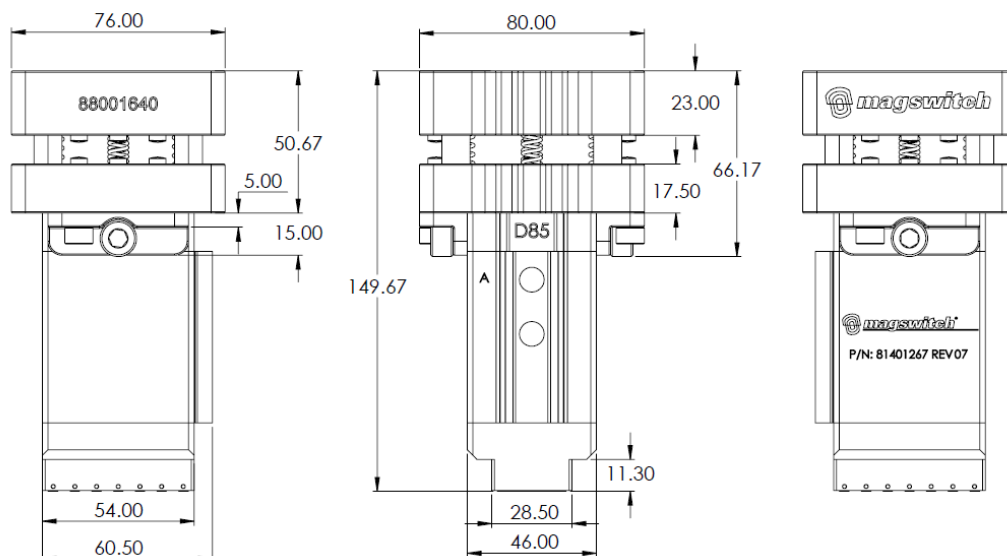
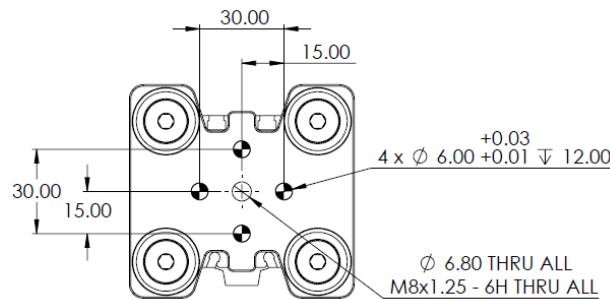
## Specifications

<b>Net Weight (Compliance Device Only)</b>	1.55 lb	0.70 kg
<b>Pitch Forward/Backward (X-axis)</b>	+/-4.5°	
<b>Roll Left/Right (Y-axis)</b>	+/-4.5°	
<b>Yaw Clockwise/Counterclockwise (Z-axis)</b>	Negligible Movement	
<b>Z-axis Compression</b>	-5mm	
<b>X-axis or Y-axis Lateral Movement</b>	+/-1.5mm if in compression	
<b>Dimensions (Compliance Device Only)</b>	80mm x 76mm x 66.17mm	



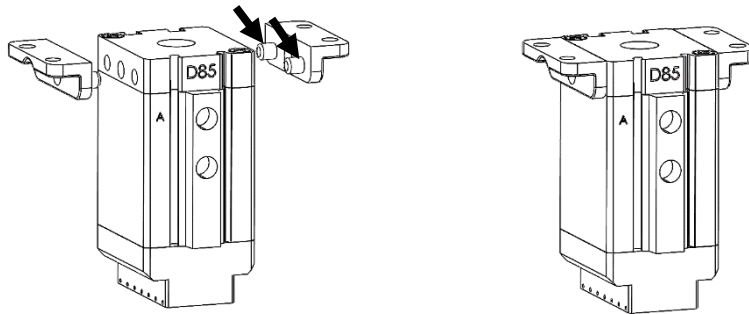
### Compatible Tool Available:

D85 (sold separately)	81401267
Soft spring (included, installed)	1802516
Hard spring (included, packaged separately)	1802178

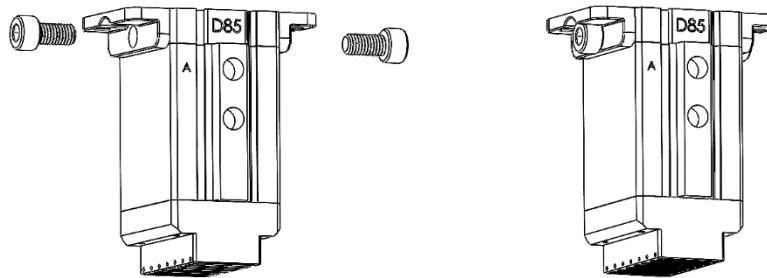


## Installation Instructions

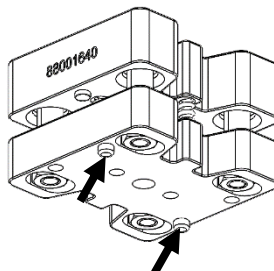
- Switch the D85 tool to the OFF state.
- Remove the D85 tool from preexisting mounting surfaces as required to expose top surface of the tool. Ensure dowel holes are clean. Confirm the top surface of the tool is flat and smooth.
- Install two brackets on sides of D85. Align two dowel pins on each bracket with the dowel holes on each side of D85. Insert dowel pins until the brackets are flush against D85 side surfaces.



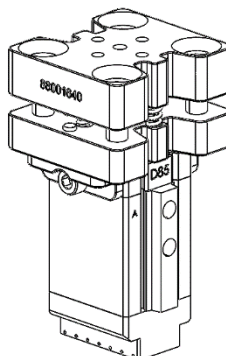
- Apply Thread Locking Compound on the thread of M8 Socket Head fasteners. Thread and tighten the fasteners through the brackets into the threaded bore on sides of D85. Torque the fastener to 41Nm.



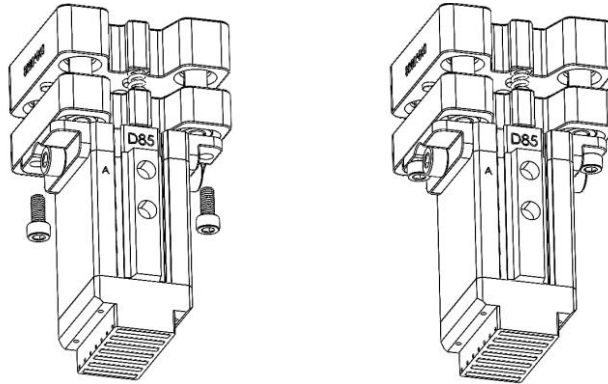
- Insert two dowel pins into the dowel holes on the bottom of Compliance Device.



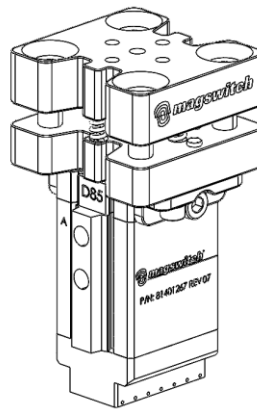
- Install the Compliance Device on top of D85. Align two dowel pins with the dowel holes on top of brackets. Insert dowel pins until the Compliance Device is flush against brackets and D85.



- Apply Thread Locking Compound on the thread of M6 Socket Head fasteners. Thread and tighten the fasteners through the brackets into the threaded bore on the bottom of Compliance Device. Torque the fastener to 18Nm.



- The installation of D85 Compliance Device is complete. There should be no visible gaps between the D85 tool and the Compliance Device.



\*Note: Please contact your sales representative for information regarding spring replacement