



Magswitch Technology, Inc.  
1355 Horizon Ave  
Lafayette, CO 80026  
Magswitch.com.au  
303-468-0662

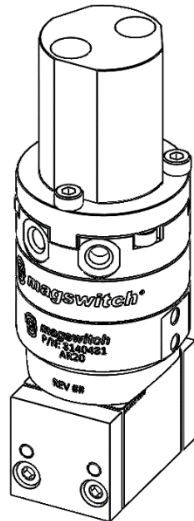
## Magswitch AR20 Classic

### P/N: 8140481

Magswitch “AR” series is explicitly designed for use with pole shoes. Pole shoes must be attached to the unit in order to maximize breakaway force and minimize residual magnetism. Each Magswitch “AR” unit comes equipped with one set of dowelled flat pole shoes. The “AR” series allows complete customization of pole shapes to provide the best hold on your hard to grip parts.

**Note: You may have to design and fabricate custom pole shoes depending on your application for optimal performance.**

**WARNING!**  
**Do Not Operate Unless In**  
**Contact With Ferrous Target**



**WORKING SURFACE**  
**BLACK=BEST**  
**GRAY=MODERATE**

#### SPECIFICATIONS

##### P/N: 8140481 - MAGSWITCH AR20 Classic

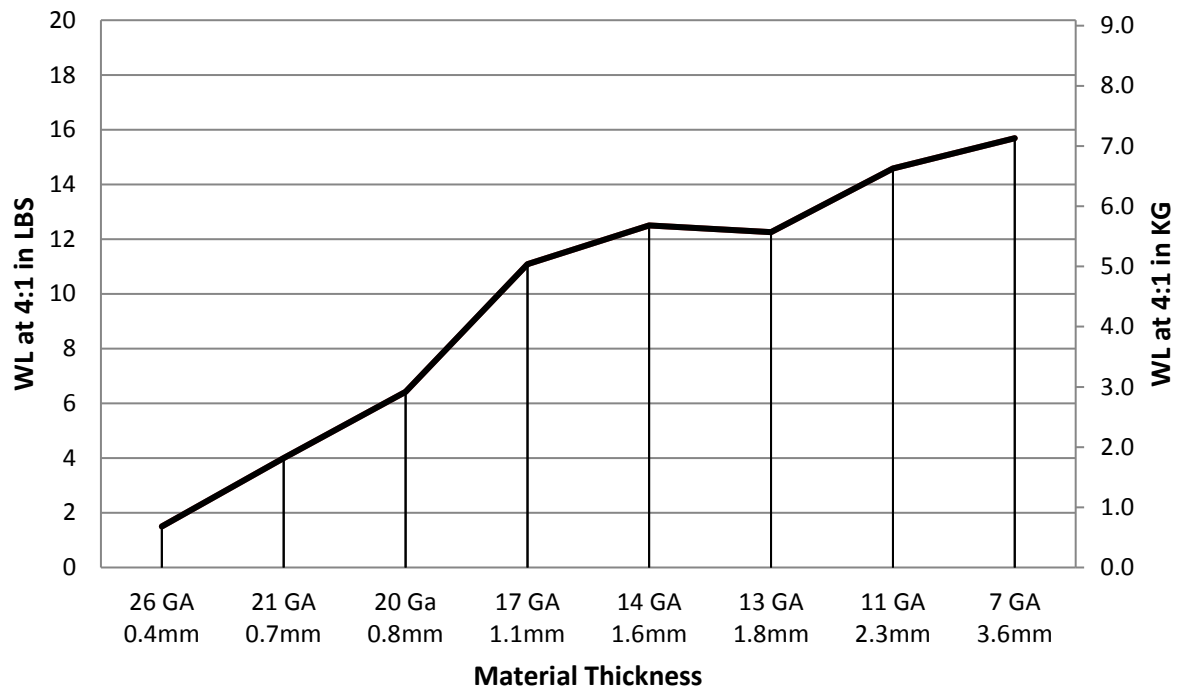
Max Breakaway*	63 lbs/28.6 kg
Working Load 4:1*	15.75 lbs/7.2 kg
Full Saturation Thickness	11 ga/3.0 mm
Max Shear 2:1*	6 lbs/2.7 kg
Minimum Thickness for De-Stack	11 ga/3.0 mm
Min Actuation Pressure	20 psi/1.4x10 <sup>5</sup> pa
Max Actuation Pressure	100 psi/6.9x10 <sup>5</sup> pa
Off Target Actuation Pressure	39 psi/ 2.6x10 <sup>5</sup> pa
Net Weight	0.4 lbs/0.2 kg
Air Port Thread	M5x0.8
Mounting Thread	M3x0.5
Overall Height	98.50 mm
Magnetic Pole Footprint	26x22 mm

\* Max Breakaway determined in laboratory environment on 2" thick SAE1018 Steel with surface roughness 63 micro inches. Many factors contribute to the actual breakaway force in each application. Always test the magswitch in each application before deployment. Refer to the magswitch information booklet for more information.

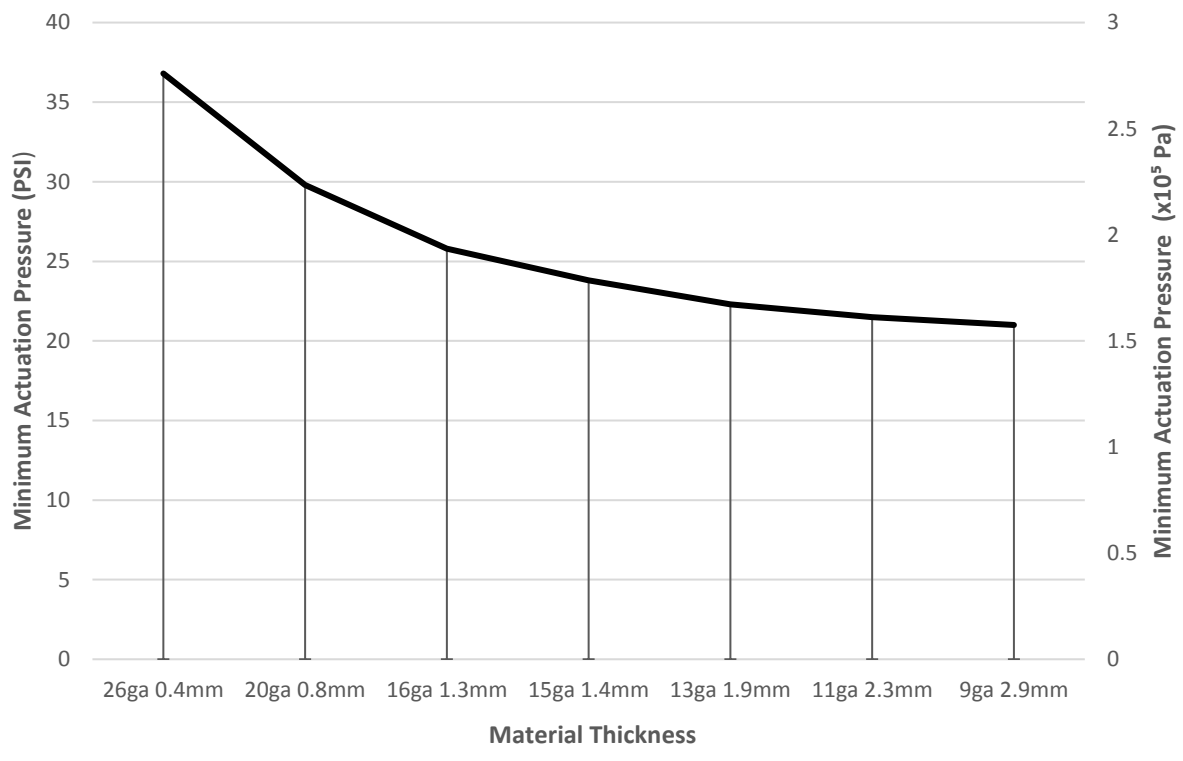
Part Number 110613  
Revision Date: 11/29/2016



### Magswitch AR20 Classic Working Load

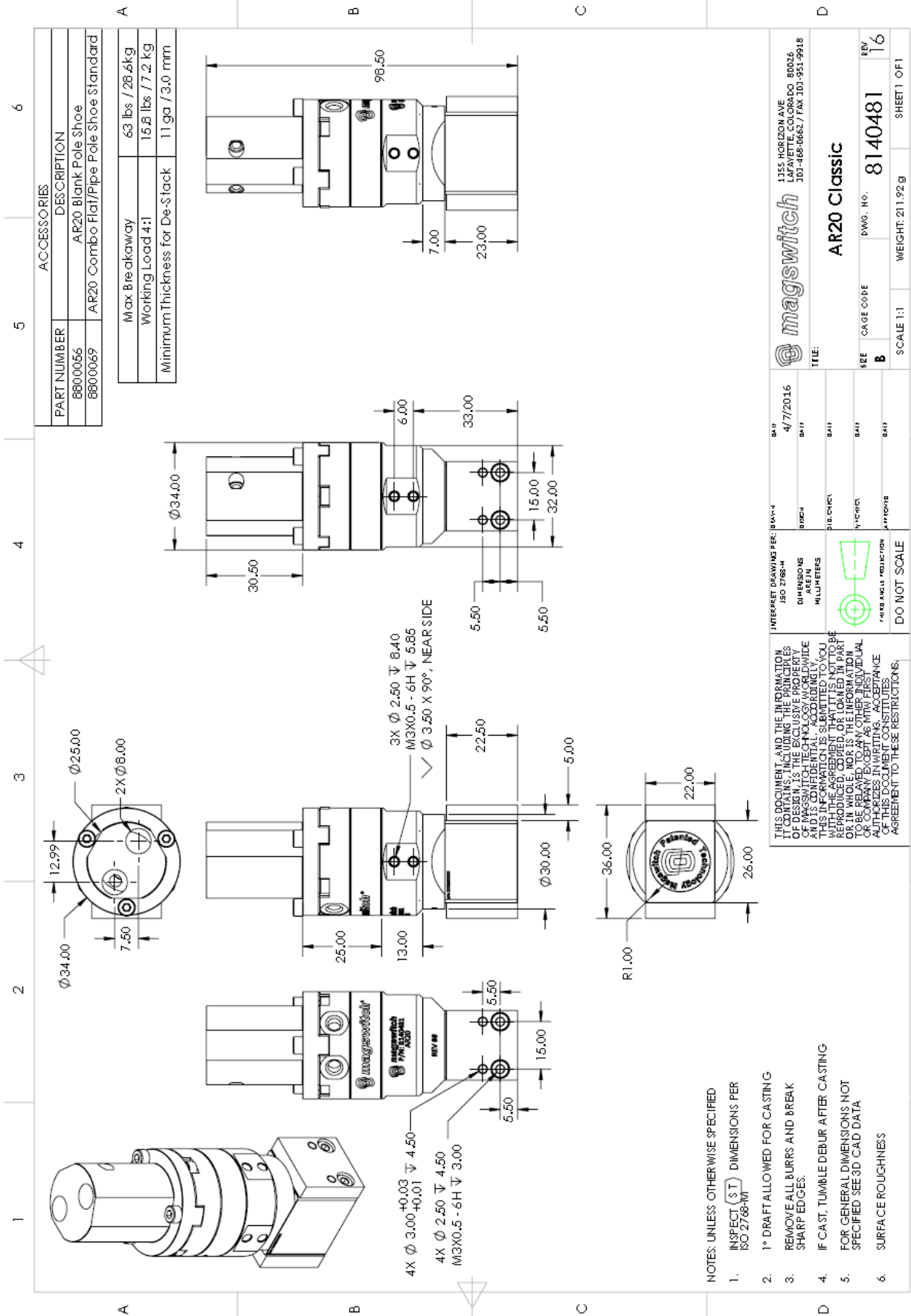


### Actuation Pressure Vs. Material Thickness



Part Number 110613  
Revision Date: 11/29/2016

\* Max Breakaway determined in laboratory environment on 2" thick SAE1018 Steel with surface roughness 63 micro inches. Many factors contribute to the actual breakaway force in each application. Always test the magswitch in each application before deployment. Refer to the magswitch information booklet for more information.



ACCESSORIES	
PART NUMBER	DESCRIPTION
88000556	AR20 Blank Pole Shoe
88000659	AR20 Combo Flat/Pipe Pole Shoe Standard

Max Breakaway	63 lbs / 28.4kg
Working Load 4:1	15.8 lbs / 7.2 kg
Minimum Thickness for De-s tack	11 ga / 3.0 mm

<b>magswitch</b>			
1355 HORIZON AVE LAFAYETTE, COLORADO 80025 303-468-8662 / FAX 303-931-9918			
TITLE: <b>AR20 Classic</b>			
SIZE	CAGE CODE	DWG. NO.	REV.
<b>B</b>		<b>8140481</b>	<b>16</b>
SCALE 1:1		WEIGHT: 211.92 g	SHEET 1 OF 1

INTERPRET DRAWING PER: ISO 2768-M  
DIMENSIONS ARE IN MILLIMETERS  
DO NOT SCALE

THIS DOCUMENT AND THE INFORMATION IT CONTAINS, INCLUDING THE DRAWINGS OF DESIGN, IS THE EXCLUSIVE PROPERTY OF MAGSWITCH TECHNOLOGY WORLDWIDE. THIS INFORMATION IS SUBMITTED TO YOU WITH THE AGREEMENT THAT IT IS NOT TO BE REPRODUCED, COPIED, OR LOANED IN PART OR IN FULL, FOR ANY PURPOSE, WITHOUT THE WRITTEN PERMISSION OF AN INDIVIDUAL OR COMPANY EXCEPT AS MAY BE FIRST AUTHORIZED IN WRITING. ACCEPTANCE OF THIS DOCUMENT CONSTITUTES AGREEMENT TO THESE RESTRICTIONS.

- NOTES: UNLESS OTHERWISE SPECIFIED
- INSPECT (S T) DIMENSIONS PER ISO 2768-MT
  - 1° DRAFT ALLOWED FOR CASTING
  - REMOVE ALL BURRS AND BREAK SHARP EDGES.
  - IF CAST, TUMBLE DEBUR AFTER CASTING
  - FOR GENERAL DIMENSIONS NOT SPECIFIED SEE 3D CAD DATA
  - SURFACE ROUGHNESS



Part Number 110613  
Revision Date: 11/29/2016