



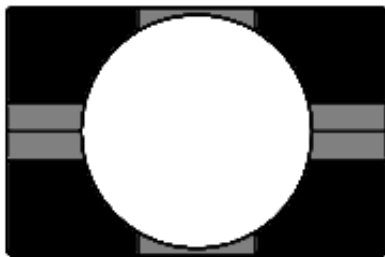
Magswitch Technology, Inc.
 1000 S. McCaslin Blvd, Suite 301
 Superior, Colorado 80027
 Magswitch.com
 303-468-0662

Magswitch MagSquare 165 UH P/N: 8100610

Welders and fabricators are raving about all the uses, convenience and time savings with Magswitch MagSquares. MagSquares are extremely powerful on magnetic blocks with strong holding force available on all sides. Welders have never enjoyed this complete control over incredibly strong magnets. You can precisely position the MagSquare and material, and then turn the magnet on. MagSquares feature multi-plane workholding capability. It takes away the need for time consuming manual clamping on so many jobs, and works anywhere there is steel; you don't need an edge like you do with C-Clamps. All MagSquares are machined at 90 degrees, have pre tapped holes on all sides for mounting tools, jigs and fixtures. Fast 180 degree turn of the knob turns the MagSquare on and off. When off, nothing sticks to them. Once you understand all the uses, the time savings in set ups, and the ability to control these powerful magnetic blocks – you will want the entire range.



WARNING!
**Do Not Operate Unless In
 Contact With Ferrous Target**



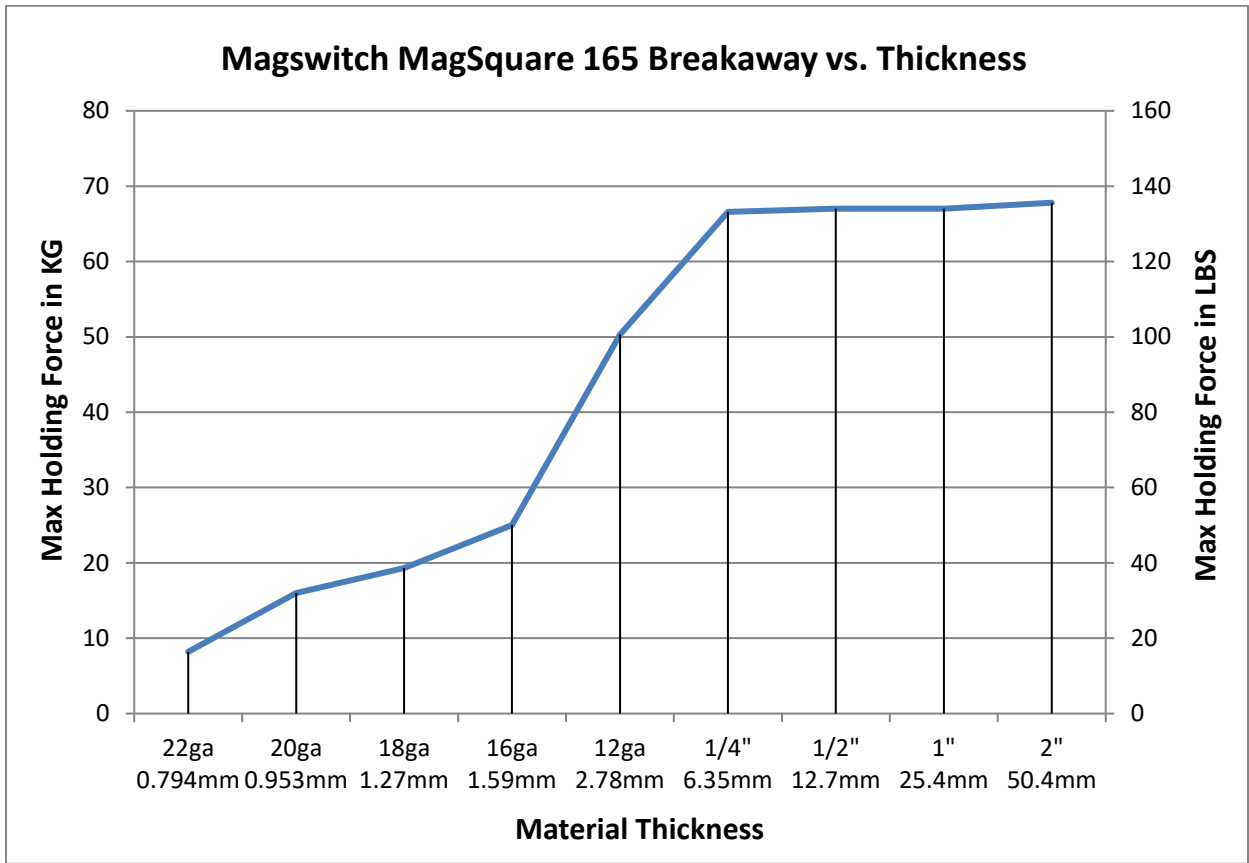
**WORKING SURFACE
 BLACK=BEST
 GRAY=MODERATE**

SPECIFICATIONS	
P/N: 8100610 - MAGSWITCH MagSquare 165 UH	
Max Breakaway*	150 lbs/68 kg
Full Saturation Thickness	0.25"/ 6.35 mm
2:1 Shear Working Load*	18.5 lbs/8.4 kg
Net Weight	0.7 lbs/0.32 kg
Overall Height	64.25 mm
Magnetic Pole Footprint	48mm x 31mm

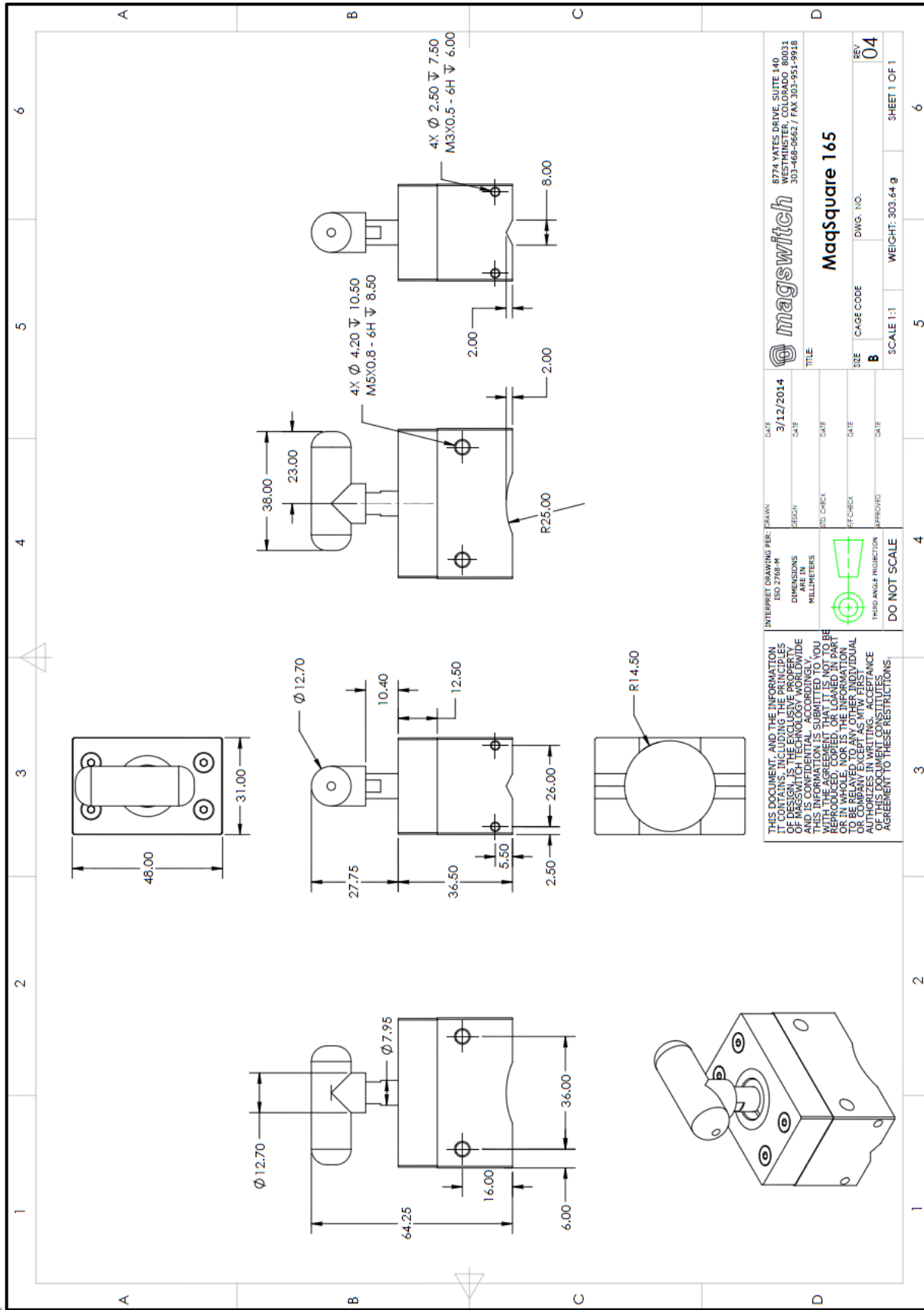


Part Number 110943
 Revision Date: August 26, 2024

* Max Breakaway determined in laboratory environment on 2" thick SAE1018 Steel with surface roughness 63 micro inches. Many factors contribute to the actual breakaway force in each application. Always test the magswitch in each application before deployment. Refer to the magswitch information booklet for more information.



Part Number 110943
 Revision Date: August 26, 2024



		877A WYTES DRIVE SUITE 140 WESTMINSTER, COLORADO 80031 303-468-0662 / FAX 303-951-9918	
MaqSquare 165		TITLE	
DATE 3/12/2014	DRAWN ISO 2768 M	DIMENSIONS ARE IN MILLIMETERS	DATE
CHECKED 	ISO CHECK	PFC CHECK	DATE
THIRD ANGLE PROJECTION	APPROVED	DO NOT SCALE	DATE
SIZE B	CAGE CODE DWG. NO.	SCALE 1:1	REV 04
WEIGHT: 303.64 g		SHEET 1 OF 1	



Part Number 110943
 Revision Date: August 26, 2024